

Shutting down school could save \$300,000

— But is it worth the price? See page 5.

Couple finds adoption easier outside country

— Here it's really a hassle. See page 13.

the Belleville times/news

Vol. 70, No. 15

Copyright Frank A. Orechio, 1979

Thursday, March 22, 1979

246 Washington Ave., Belleville, N.J. 07019

759-3200

Second class postage paid at Newark, N.J.
(USPS 049-270)

35c

'Game' seniors visit Atlantic City



City Life — Over 250 Belleville senior citizens and guests enjoyed the elaborate Wedgewood Pavilion Buffet Monday at the Resorts International Hotel Casino in Atlantic City. The group, hosted by Honey Bee, traveled in a seven-bus caravan to spend the entire day at New Jersey's Gambling City. Story and more photos will appear in next week's issue. — Photo by Donna Abate.

Juggling of accounts checks tax increase

Commissioners are dipping deeply into surplus budget accounts to keep tax increases at a minimum during this municipal election year.

Although the budgets of the five Town Hall departments are up above \$400,000 over last year, commissioners are "estimating" outside revenues will be up \$460,937 in 1979 and most of that sum comes from the additional \$344,000 being taken from the budget's surplus accounts.

Although commissioners in coming years will gradually refurbish the funds borrowed from surplus, the bottom line for taxpayers and voters in 1979 is that the tax rate will be up a minimum 19 points and only because of hikes in the local school and county budgets.

Town Hall last year accounted for 106 tax points and commissioners are asking for an identical sum in 1979. The budget actually shows the total local tax collections requested for the 1979 fiscal year to be \$1,652,750, an increase of 19.1 percent over 1978.

Belleville's budget figures and tax

rates were released late Monday after commissioners held a special session to introduce the 40-page municipal budget and set April 16 for its public hearing date.

With an unusually large field of challengers in the upcoming May Town Commission election, the incumbents are expecting criticism for dipping into budget surpluses but also expect to win the general applause from citizens at large who are more concerned with tax rates than budget complexities.

Isadore Padula, acting town treasurer, says the 23 tax-point increase projected here for 1979 includes 19 points for the schools and four more for the Essex County Board of Freeholders.

"On a \$40,000 home, that works out to a 5% increase this year," Padula explained during a conference session of commissioners Monday morning. The new tax rate, Padula says, will be \$4.17 per \$100 of assessed valuation; that figure is subject to slight variation as county

rates are adjusted.

Commissioners themselves have not commented on the budget except to say they are studying the appropriations. For the most part, the budget has been prepared by Padula's treasury department working independently with each of the five commissioners. Monday was the first opportunity commissioners had to closely examine budget accounts for one another's departments.

Beside applying \$344,000 in additional surplus funds, the 1979 budget is offset by an additional \$64,000 income from franchise taxes.

Current budget accounts for the five municipal departments show Public Safety Director Rocco Saletta's expenses up \$198,970. Saletta's department has about the same number of employees as the other four departments combined.

Commissioner Mary Senatore's Public Works Department budget is up \$101,597. Mayor Michael Marotti's Parks and Public Property Department budget shows a \$48,077 increase. Public Affairs Commissioner Vincent Strumolo's health budgets are up \$44,125, and Finance Commissioner Joseph McGreevy's department, the smallest at Town Hall, reflects an increase of \$11,895.

Commissioners are expected to detail some of the major budget concerns in the various departmental areas before the April 16 hearing at Belleville High School's auditorium. That session is set for 8 p.m. and falls only three weeks before voters select five persons for commission seats continuing through 1983.

Commissioner Saletta has announced he will not be a candidate for election. The other four incumbents are all in the race for new terms but face an unusually large field of challengers.

The 1979 municipal budget will be printed, line by line, in next Thursday's issue of the Belleville Times/News.

State's alcohol director finds disco guilty on five of six counts — 105-day shutdown

By Donna Abate

Parrillo's will close for 105 days starting Monday following the long-awaited decision by state ABC Director Joseph Lerner, but according to disco attorney David S. Piltzer, another appeal is "under discussion."

Piltzer said that he would now discuss with disco owners the possibility of appealing Lerner's decision to the appellate division of the Superior Court.

If an appeal is submitted to the Superior Court, Piltzer explained that Lerner's decision would be stayed pending another decision that

could take several months.

The Town Excise Board charged Parrillo's over four months ago with six offenses and closed the disco for 120 days. An appeal reopened the disco until Lerner's decision last Friday.

Lerner upheld five of the six charges against the disco, but due to lack of evidence proving obstruction of justice and police investigation in an alleged knife at Parrillo's last Sept. 24, one charge was reversed.

Lerner, however, found Parrillo's guilty of permitting fights and brawls in or about the premises; continually permitting patrons to loiter in and

about the public sidewalks, street areas and parking lots immediately adjacent to the premises; failure to maintain adequate crowd control with respect to patrons entering and leaving premises; continual noise disturbance and maintaining a public nuisance by continually disturbing the peace and quiet of the neighborhood.

Since one charge was dismissed, Lerner reduced the original Excise Board penalty of closing the disco for 120 days to 105 days.

Parrillo's will remain open until Monday but will be closed until July 9 unless the appeal option is taken.

The town will attack the disco from another legal angle Monday. Assistant Town Attorney Frank Zinna will file a brief the same day charging Parrillo's with a zoning violation.

Parrillo's is currently appealing Appellate Court Judge John Abramson's verdict that the disco was guilty of operating as a non-conforming use in the existing zone.

Parrillo's had been granted a variance as a restaurant within the zone. The town then charged that the disco was not a permitted use under that variance. Abramson agreed, found Parrillo's guilty and closed it.

Disco attorney Allen C. Marra appealed the decision to Judge John Walsh who asked that briefs be submitted. The disco was automatically reopened pending a stay on Abramson's decision.

Marra said that Parrillo's did not change the use, just the form of dancing. "Nothing was actually added on, and food is still served," he said.

Zinna noted that the variance was granted for a restaurant with incidental dancing. "Parrillo's can continue the use but cannot change it or intensify it," he said.

"The town is arguing that Parrillo's is a restaurant," he said. Please see "Disco" on page 17.

School Board votes tax hike of 19 points with no dissent

Before only seven citizens, the Belleville Board of Education voted 6-0 Friday approving a \$11,275,576 budget for 1979-80 — which is \$769,354 more than last year.

School taxes will rise 19 points, or about \$70 for an average \$40,000 homeowner if the budget passes. The budget is exactly even with Belleville's 6.38 percent "cap" increase allowed under state law.

Not one citizen questioned the trustees' final budget before its okay. Schoolers Mike Chieffo, Ernie Zoppi, Pete Clarizio, Anthony D'Agostino, Matt Pica and Ralph Risoli quickly passed the budget, the meeting ended, and they all soon dispersed.

Board members briefly noted the budget hearings held from Jan. 22-March 12 made them aware of many citizen concerns and complaints while downplaying the poor turnout Friday night.

A final hearing on the "79-80 budget was scheduled for March 15 at the high school, which trustees then switched to March 19. On

March 12, trustees again changed the final hearing to March 16 — but most people were apparently unaware the final budget vote would be taken then.

Why the final hearing date was changed three times raises questions about the board's motives since meetings are rarely ever held on Fridays. Board President Matt Pica said trustees had "other commitments" this week, making a postponement of the final public hearing impossible.

Trustees stressed in past years that few citizens have bothered to show up at the final budget hearing. At previous budget forums, however, board members have repeated "all details" will be available March 19 before they switched the final hearing date.

Notification of the final hearing was given to local papers and the Belleville Times/News advertised the final budget.

"It's a damn shame there's no people here to question the (final) budget," said Joe Fornarotto, a com-

missioner candidate. He asked trustees to delay a final budget vote but they refused noting the meeting was "properly announced and the budget advertised."

Belleville's local school taxes will increase 8.08 percent or \$561,795 more than '78-'79. The budget amount local taxes will pay raises to \$7,514,447 from \$6,952,651 last year. The '78-'79 budget includes the \$141,000 restored by the Commissioners of Education after last year's budget deficit and cut.

Belleville's Board of Commissioners are not appealing that budget restoration.

Administration costs are up \$8,044 (2.6 percent), instruction up \$494,745 (7.7 percent), pupil transportation up \$20,384 (6.4 percent), and plant operations up \$57,118 (5.6 percent).

Plant maintenance is down \$11,503 and food services down \$16,896. Fixed charges, including pensions, insurance and fidelity bonds are up \$39,728 and athletics is up \$14,149 (11 percent).



Rev. Bliss — The missionary recently spoke to the Belleville Assembly of God of his experiences in Iran.

Missionary believes Iran crisis spiritual

By Mike Olohan

"It is a work of God and the Holy Spirit that makes a spiritual man or spiritual woman. God wants to use each one of us to meet those tremendous spiritual needs you come in contact with each day and don't be selective in who you try to help," said the Rev. W. Mark Bliss, an Assembly of God missionary from Iran.

Rev. Bliss spoke to about 40 people at Belleville's Assembly of God last Wednesday, singing and praising God in a joyous celebration of the human spirit. He alluded to a Christian's moral responsibilities, noting helping others and sharing love and experiences not only enriches those around a person but the person himself.

Rev. Bliss, waving his hands slowly to stress his points, noted that 98 percent of Iran's 35 million people are Moslems. "They believe that someone else died on

the cross," said Rev. Bliss. "They believe Jesus was translated out of this world. They just need to be turned around."

The Assembly of God has one Bible school in Iran, said Rev. Bliss, but the present political crisis has caused most missionaries to leave.

Rev. Bliss said he recently learned a roving, enraged group of protestors were about to burn down an Assembly of God church in Iran, "but a Moslem priest sat in front of the angry crowd. He told them they'd have to burn him first before they could burn the church, and so they turned away."

"I suppose you think I read it wrong," he said, referring to his friend's letter relating the story. "But God actually used a Moslem priest to help us save that church."

Please see "Moslem" on page 5.

AT JAMES SHAWGER SCHOOL

Roof, lighting fixtures fall on students

Angry parents and their children boycotted the James G. Shawger School a week ago Friday to protest the desegregation of the school's roof.

About 75 parents accompanied their children in picket lines in front of the school, claiming that they would not allow their children into the school until the Board of Education signed a contract for a new roof. Other parents, in sympathy with the pickets, kept their children out of school for the day.

By 10 a.m. Friday morning, School Principal Michael Nardiello reported only 63 of the school's 306 students were in attendance.

As the crowd chanted "We want a new roof," Town Building Inspector Robert Donenick inspected the building with Board members Ralph Risoli and Ernest Zoppi. Donenick decided to close off five classrooms on the second floor.

In several of the closed rooms, buckets line the floors to catch the rain that has been seeping in through the roof. One teacher said that she had to move her class out for a week because plaster had fallen.

"I had 10 buckets on the floor, the rain was coming down pretty hard," she said.

• ONE THIRD GRADE classroom accumulated enough moisture to warp the floor, and the teacher expressed that the situation was "very dangerous."

"I've been devoting a lot of time telling the children to watch where they step and to be careful," the teacher explained.

Last week, a fluorescent light bulb fell on three sixth grade students, causing no injury but great wrath in many parents who send their children to the Silver Lake school.

"The situation here is a disgrace. The children here are not going to get an education dodging all the hazards," Linda Moyer, vice president of the Parent Teacher's Association said.

The damage in the school and to a new roof is an actual emergency.

Money-Maker
mother with children (3-12 years of age)
We want your opinions!
If interested please call:
Rutherford location 935-3410
between 9:30 a.m.-1:00 p.m.
Monday thru Friday

JACK & JILL Montessori
DAY NURSERY • Preschool • Kindergarten
• Ages 6 mos-6 yrs
• Open 7:00 am-6:00 pm
• Open Year Round
• State Certified
• Montessori Trained Staff
• Enrollment-2, 3, & 5 Day
• Full or 1/2 Day
• Ed-Dir: Rosemary Stark M.A. (Ed) Mont Dip (London) A.M.S.
• B.C. Ker Mont Dip (AMI) P.B.T.C. (INDIA), Dip G. Art, M.A.M.I.
• Executive Director
Affiliated With Academy Montessori International
CALL 743-6898

HAPPY DAYS...
are here again in this lovely 4 bedroom home. For only \$43,900 you can start your happy day with breakfast served in a sunny eat-in kitchen. Your happy day can end with an enjoyable dinner served in a formal dining room. Buy this home and you'll be in a happy mood all day long.
Evenings call Gerri Runyon at 748-4715

HOUSE OF THE WEEK
Century 21
Wayne K. Thomas Realty
277 Broad Street
Loomfield, New Jersey 07003
429-7400
Each Office Independently Owned & Operated



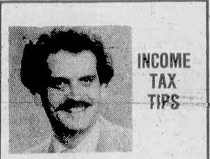
PIVOLI
Gardens
RESTAURANT
"Serving the finest in Italian and Continental Cuisine"
Your Host: Michael Servidio
Rte. 46W, Pine Brook, N.J. 227-6868

DON'T MOVE... IMPROVE!
CALL
LAZUR'S
HOME IMPROVEMENT CENTER

ALL TYPES OF ALTERATIONS ADDITIONS GARAGES
DEAL DIRECT WITH OWNER
SAVE ON SALESMAN COMMISSION!
IN BUSINESS FOR OVER 20 YEARS
667-6940
FULLY INSURED
WORKMANSHIP-GUARANTEED

ROOFING
ATTIC ROOMS & DORMERS
SAVE \$ WITH BLOWN INSULATION
BATHROOM & KITCHEN REMODELING
KITCHEN REMODELING SPECIALISTS
WET-BARE KITCHENS
ALUMINUM SIDING
EASY FINANCING AVAILABLE
STORM DOORS & WINDOWS
Replacement Windows
BASEMENT REC ROOMS
VISIT OUR KITCHEN SHOWROOM

234 FRANKLIN AVE. NUTLEY, N.J.
CONVENIENT PARKING
ENTRANCE IN MUNICIPAL PARKING LOT



by ROBERT CARUSO C.P.A.

INCOME TAX TIPS

MISCELLANEOUS DEDUCTIONS
The following are a selection of some of the miscellaneous deductions you may be entitled to:

1. Political contribution of \$100 (\$200 if married and filing a joint return) are deductible. However, in certain cases, it is better to take the \$25 (\$50 if filing a joint return) tax credit. Refer to IRS Publication 585.
2. Educational expenses you voluntarily take to maintain or improve your job related skills are deductible. These expenses may be deducted even if the education leads to degree. Refer to Publication 508.
3. Employee related expenses for tools, uniforms purchased and upkeep dues, periodicals, journals, employment agency fees.
4. Cost tax return preparation and tax planning.
5. Malpractice insurance.
6. The use of a portion of your home exclusively and regularly in connection with your work.

For tax return preparation, tax and estate planning and complete accounting services call 759-4949 for information or an appointment.

THE KING OF PRICES
Hot & Cold Catering
BILL-TONE'S
95 Harrison Street, Nutley
667-4877
ONE WEEK ONLY
March 23rd to 29th
We Slice To Your Order
Store Hours: 7:00 A.M. to 9:00 P.M.

MUENSTER CHEESE \$2 ⁰⁹ lb.	SIRLOIN BEEF PATTIES \$2 ⁰⁹ lb.
THUMANN'S SPICED HAM \$2 ⁰⁹ lb.	MRS. SMITH'S PIES \$2 ¹⁵ & up Serves 8-10
HORMEL HARD SALAMI \$2 ⁹⁹ lb.	HOMEMADE ITALIAN SAUSAGE \$1 ⁹⁹ lb. Hot or Sweet

Now at First DeWitt

8.45% 8%
ANNUAL YIELD ON
SAVINGS
CERTIFICATES
8 YEARS - \$1,000
LIMITED ISSUE

PLUS DAILY COMPOUNDING MONTHLY DIVIDENDS

ANNUAL YIELD	RATE	TERMS & MINS
8.17%	7.75%	SIX YEARS \$1000
7.90%	7.50%	FOUR YEARS \$1000
7.08%	6.75%	30 MONTHS \$1000
6.81%	6.50%	ONE YEAR \$1000
6.00%	5.75%	90-DAY, CERTIFICATES \$1000
REGULAR PASSBOOK SAVINGS		
5.47%	5.25%	DAY-IN-DAY-OUT

TEN DOLLARS MUST REMAIN ON DEPOSIT UNTIL END OF MONTH

Nowhere can you get a better deal for your savings than at First DeWitt. Our new sky-high-interest Certificate virtually doubles your money in ten years. And just check all the other beautiful plans with low minimum deposits, very short terms, daily compounding and interest credited monthly. To top it all, your funds are insured to \$40,000 by the Federal Deposit Insurance Corp. That's real solid security!

To open an account, visit the office nearest you or do it by mail. Just call and we'll send you the forms.

Federal regulations require substantial penalty for early withdrawal. Monthly dividends not applicable to school savings, IRA and Keogh accounts or security deposits.

1 First DeWitt Savings
AND LOAN ASSOCIATION
BELLEVILLE • BLOOMFIELD • HOPATCONG

MAIN OFFICE: 463 Washington Ave., Belleville
BLOOMFIELD CENTER OFFICE: 657 Bloomfield Ave., Bloomfield
WATKINS OFFICE: 20 Watkins Ave., Bloomfield
BROOKDALE OFFICE: Broad St. & Watchung Ave., Bloomfield
FOREST HILL OFFICE: 60 Belleville Ave., Bloomfield
HOPATCONG OFFICE: Sharp Ave. & Hopatcong Rd.

IN BELLEVILLE CALL 751-2800 • IN BLOOMFIELD 743-6300 (ALL OFFICES) • IN HOPATCONG 398-0900

You couldn't do business with friendlier people



Pharmacy Footnotes

Vincent Cozzarelli
Reg. Ph.

Drug stores have been around for a long time. After all, they have been needed, in one form or another, since people started getting aches and pains. In frontier country America, the need was early. However, the original drug stores in our country did not look much like the ones in existence now. But, interestingly enough, they often carried the extremely wide range of products many full line drugstores carry now. Early drug stores were horse drawn wagons carrying everything from jewelry, clothing, kitchen ware, etc. to all sorts of remedies and medicines.

You'll find a wide range of products from convalescent aids to cosmetics, plus full prescription service when you come to us at **ROSSMORE PHARMACY**, 338 Washington Ave., 759-1968, 759-1956. For Easter see our complete assortment of greeting cards and candies. Hours: 9am-10pm daily, 9am-9pm Sundays.

HELPFUL HINT:
Discord aspirin that has crumbled.

Planners approve 14 zoning changes

Town Commissioners are still studying 14 recommended amendments to the recently adopted zoning ordinance. The 14 changes were formally passed on to commissioners by the Belleville Planning Board earlier this month.

One of the key items proposed but rejected by planners is rezoning the area southwest of Joralemon and Main Streets. Planners also are rejecting suggestions by some business leaders to return to the old zone code provision which enables apartments to exist in general business zones.

Planners unanimously discarded the recommendation to change the zoning southwest of Joralemon and Main Streets to an industrial zone since the area was described as "unsuitable for two family development."

"We would only be promoting a high class spot zoning if we changed the area to industrial," Ralph Risoli commented.

"We all know the industry in that zone would not pay off," Frank Simeone added.

"I'll never go along with that change," Joseph Grande, board chairman, added.

Many residents from the Valley section of Belleville attended the meeting and a loud applause echoed in the chamber when the board discarded the recommendation.

"We live in the Valley," Greg Noon of Stephens Street said. "We want to upgrade our area, we don't

want more industry."

"I WANT THE VALLEY to remain as it was," Risoli interjected. "They always seem to get the dirty end of the stick in that area."

The recommendation to permit residential uses in a general business zone also stirred much response from the board members. The zoning ordinance committee — Al Schmitt, Ed Heibert and Joseph Doyle — studied the towns of Nutley and Bloomfield which do not permit free standing residential uses and therefore recommended no change unless a mixed use above a business.

Planning Board consultant Grace Harris advised that modern planning concepts favor eliminating residential uses in order to encourage a more favorable business climate.

Mrs. Harris also said she recognized that Washington Avenue does have a number of new multi-family structures which would become non-conforming and also pointed out that the ordinance does permit senior citizen housing as a conditional use in a general business zone.

Grande strongly commented that multiple-family dwellings should be permitted in the general business zone especially along Washington Avenue.

"The stores need that pedestrian flow from apartments," But committee member Heibert responded, "We've had the residential use before on Washington Avenue but nothing was done about it."

Grande also opposed the comparison with Nutley and Bloomfield and suggested to table the recommendation for further study. The vote was unanimous.

The board did approve the new neighborhood retail zone which additionally permits neighborhood retail outlets, service establishments, small offices and professional uses.

THE OLD R-D ZONE permitted neighborhood retail stores as a non-conforming use. With the new B-D zone, it is permitted in the zone. The zone also permits an increase of three employees as proposed to one, and a height limitation increase to 30 feet.

Other recommended controls include a minimum lot size of 5000 square feet with 50 feet frontage and 100 feet depth. Commercial area is also limited to the street level and no living quarters are permitted facing the street on the ground floor in a mixed use.

The new zone is also extended to the general business zone all along Franklin Street.

Mrs. Virginia Desmond, who campaigned for a change in the old neighborhood retail zone which affected her business, Wadsworth Funeral Home, on Union Avenue, thanked the board and committee for changing the zone.

"Speaking for everyone in my neighborhood, I want to thank you for all the time you've put into this," Mrs. Desmond said.

The other major change brought about by the zoning ordinance recommendations is to change the height limitation in the industrial zone from eight stories and 100 feet to three stories and 40 feet. The trend in industry stressed in the ordinance is toward lower structures. The board unanimously passed the change.

The board approved the zoning committee's recommendations to refrain from changing the seven other designated zones. These suggestions include: changing Eugene Place from a two-family to a multi-family zone; changing the Pathmark property on Belmont Avenue from commercial business to industrial; rezoning the Cerami Construction Co. property bounded by Joralemon, Holmes, Stephens and Cortlandt Street to industrial; rezoning first four lots going south along the west side of Valley Street from Academy to industrial; permitting multi-family dwellings in the new neighborhood retail zone and to review the high rise business zone.

Mrs. Harris added four recommendations to the committee's list which the board unanimously approved. The first was to add auto body shops as a conditional use in the industrial zone.

SHE ALSO CORRECTED a mistake on page 36 in the Zoning Ordinance under conditional use in a general business zone which read: "philanthropic or eleemosynary uses, hospitals OTHER THAN correctional institutions, asylums for the insane or drug treatment centers."

Mrs. Harris also changed the maximum coverage percentages which were also in error. One-family homes were reduced from 45 per cent to 35 per cent and two-family homes were reduced from 45 per cent to 30 per cent. This schedule of regulations appears on page 5, Article III.



Gift from Police — Belleville PBA President William Escott presents a check to Rudy Rinaldi, Sabastino Renna and Michael Tsamas representing Essex County Multiple Sclerosis Association. Police raised monies for the association's building funds by sponsoring a Santa Claus picture taking concession. The Multiple Sclerosis Association is building a new therapy center at Ralph and Belavista in Belleville.

Magician John Cozzarelli will entertain here on Wednesday

John Cozzarelli, noted local magician, will highlight the Mary V. Senatore Civic and Welfare Association regular meeting Wednesday at 8:15 p.m. at the Chandelier Restaurant.

Cozzarelli, a 1977 Belleville High School graduate, will perform various feats of magic and illusion which he originally created.

A member of the Society of American Magicians, Cozzarelli now attends the Brooklyn College of Pharmacy at Long Island University.

Cozzarelli, who will be assisted by his brother Joseph, 16, sister Linda,

13, and Richard Cuzzi, 18, has presented his magic show at various hospitals along with a benefit for Muscular Dystrophy at the New Jersey Institute of Technology with

Theta Chi Fraternity. The meeting will also include the regular monthly business presided over by Frank J. Carragher Jr., group president.


Dr. Schait E. Frank
Surgeon Podiatrist

SPECIALIZING IN PODIATRIC MEDICINE & FOOT SURGERY

is located at
567 Franklin Ave., Belleville-Nutley Line
759-6298

HOURS DAILY BY APPOINTMENT

VALENZA OPTICIANS
Of Nutley



Own An Original Puccll
Become part of the smart set and own an original designed by Emilio Puccll. An elegant pair of fashion glasses by the master of design.

20% OFF TO SENIOR CITIZENS

SERVING YOU AT
357 FRANKLIN AVE.

Mon. & Fri. 10-9
Tues., Wed., Thurs. 10-8
Saturday, 10-5

661-3451

(ACROSS FROM POST OFFICE)

Imitated, but never matched—
you can still go "direct!"

DIRECT ACCOUNT

almost like
5 1/4% interest
on checking

Stop in at your nearest Provident office for complete details, rules and Federal regulations governing Direct Account transactions.

Call toll-free from New Jersey 24 hours a day/7 days a week
Call (800) 742-2800

For information about Direct Account please call 9 to 5, Mon. thru Fri.

ESTABLISHED 1839 THE OLD BEEHIVE

PROVIDENT SAVINGS BANK

HUDSON, BERGEN, ESSEX, OCEAN, MONMOUTH, MIDDLESEX, SOMERSET, AND MERCER COUNTIES

MEMBER FDIC • EACH DEPOSITOR INSURED TO \$40,000

The Nutley Family Service Bureau Auxiliary at the

cut-a-thon

presented by

the hair company
200 Franklin Avenue • opposite high school

SUNDAY march 25
noon to 6pm

HAIRCUTS
men & women \$10
children \$7

haircuts by Girl #5

Appointments preferred

Reservations to
667-9000

walk-ins accepted



Thurs. Fri. Sat. & Sun. Specials

1 lb. HOT REAL JEWISH PASTRAMI	\$2.99
1 lb. LEAN DOMESTIC BOILED HAM	\$2.19
1 lb. IMPORTED SWISS CHEESE	\$2.39
1 lb. HORMEL HARD SALAMI	\$2.99

SPECIALS SOLD IN ONE POUND PACKAGES ONLY

PICK UP PARTY BROCHURE NOW
Open 7 days a week till 10:00 P.M.

Towne **751-3935**

DELICATESSEN

650 JORALEMON ST.
Cor. Franklin A. S., Belleville

The "SHEAR SHACK" I & II

261 Franklin Ave., Nutley
Phone: 667-1741

219 Broad Street, Bloomfield
Phone: 748-4200 or 743-9832

For Spring, **CURLS** are played soft and loose, with no up keep. **HAIRCUTTING**, very spirited, very beautiful, very selective. **HONEY SUN STREAKING**, superb and striking. **HENNA**, as a natural product has found favor with the ecology minded.

♀ ♂

WHEN ONLY THE BEST WILL DO!

opinion

Good job done on municipal budget

The proposed 1979 budget for the town of Belleville requires \$4,689,000 to be raised by local real estate taxes.

In 1978, the amount raised by real estate taxes for municipal purposes was \$4,695,900.

These figures were obtained from sheet 11 of the 1979 local municipal budget document. On the assumption that they are correct, the Town Commission is to be commended for exercising a responsible attitude toward the tax burden that weighs heavily upon the shoulders of our taxpayers.

It should be noted that the commission plans to spend

\$454,418 more than last year. The comparative expenditures are 1979 — \$9,816,543 and last year, \$9,362,125. The 1979 increase was primarily accommodated by use of surplus funds.

The proposed municipal budget is worthy of endorsement and support. While we have some reservations about municipal spending in the context of priorities, we fully support the budget as proposed.

Frank A. Orecchio

A bad ABC rule

The New Jersey division of Alcoholic Beverage Control has published an intention to amend its rules to prohibit liquor stores "not identically owned" from joining together in cooperative advertising.

The bureaucrats who proposed the rule change are assumed to be motivated by a desire to do what's best for the New Jersey consumer.

For the past 15 years, we have been exposed to Florida Alcoholic Beverage Control rules and regulations. Perhaps the preceding sentence should refer to the "lack of rules and regulations." Florida has deregulation but from where we sit, the Florida type of deregulation permits a cartel to control prices at which liquor is sold. There is surface evidence that through a cartel arrangement Florida consumers of alcoholic beverages are paying higher prices than they should.

The New Jersey proposal to limit joint advertising to licensees identically owned is not in the best interest of the consumer.

Only stupidity or an ulterior motive can produce this unfair rule. If our able Attorney General John Deagan is unable to reverse the Alcoholic Beverage Control rule proposal, then our state legislators should make the change by statute.

The principal beneficiaries of the proposed rule are the wholesale liquor suppliers. Their cost of operations would be reduced substantially because the independent store owners would sell out, thus creating a smaller number of customers to service. Meanwhile the general public be damned.

Frank A. Orecchio

Prayer for Today

O God, we go through life so lonely, needing what other people can give us, yet ashamed to show that need.

And other people go through life so lonely, hungering for what it would be such joy for us to give.

Dear God, please bring us together, the people who need each other, who can help each other, and would so enjoy each other.

Marjorie Holmes



By FRANK A. ORECCHIO

Bevy of dark horses for governor's seat

Although the 1981 New Jersey gubernatorial campaign is two years away, the dark horses are moving quickly about the state. Essex County has Alan Sagner, chairman of the N.Y.-N.J. Port Authority; Congressman Joseph Minish, the most popular elected Essex official; Buddy Bianchi, the able State Banking Commissioner; Casino Commission Chairman Joe Lordi; Senator James Wallwork, the independent Republican. Hudson County has the highly visible Mayor of Jersey City, Tom Smith. Passaic County boasts Democrat Congressman Bob Roe and Republican Pat Kramer, Paterson mayor. Camden County has the best looking candidate, the young, smart Congressman James Florio. Union County has Republican Congressman Mattie Rinaldo and Democrat New Jersey Secretary of State Donald Lan. With each passing month the list will grow. I see no front runner at this date. Brendan Byrne's support may make the difference.

Here I go again — boasting about Eastern Airlines. Since Superbow Sunday, airports have been jam packed — planes loaded to the last seat — and still no end in sight. Stress conditions prevail daily at Newark and Fort Lauderdale Airports. Cabin staff is

driven to the limits of human endurance, attempting to cater to whims of perennial travelers. Such was the experience Sunday at midnight aboard EAL flight 406, Lockheed giant three super jet engine plane, seating 299 passengers.

The crew was magnificent. Up and down the aisles they "ran" Stewardess Kathy Comeau, at her smiling, familiar best. Diminutive Senior Stewardess Pam Christian had her eyes everywhere — placating cranky passengers. Bernice "Bunny" Scott is quite the professional stewardess. Laughter comes easily to her — and its contagious.

Stewardess Marie Dellasara, another familiar face, tried so hard to please it pained me. Stewardesses Sandy Nagda, Lee Balletta and Bobby Donnelly were equally efficient, courteous and respectful.

Proverbs to live by. — Love is not ONE of the attributes of God, but the sum of them all.

Better slip with foot than with tongue.

Better a lean peace than a fat victory.

Poverty wants some things, luxury many things, and avarice all things.

Golden Comments



By James R. Golden

It's goodbye for near future

This becomes a difficult column to prepare. It is fraught with mixed emotions and deliberate hesitancy. It entailed arriving at a decision demanding wide study and mature reflection, predicated upon the urging of many displeased segments of our community with the quality of local government in Belleville, as to whether I might consider seeking a seat on the town commission in the upcoming May 8th election.

After carefully pondering the implications of such a decision and weighing my incumbent responsibility as a concerned citizen, especially, after my many years as a proclaimed town critic and subsequent to that, having served four years as Councilman-at-large in the then newly established form of government the people voted in as an evidence of their reservation government. Only to have it changed back to commission type as an aftermath of a subtle powerplay by some present day local mayorhouse politicians to get rid of then Mayor Nuncio Pico, who had three more years of his term remaining. I have arrived at a decision.

I shall run. I feel that my wisdom of maturity and experience coupled with my comprehensive knowledge of municipal government along with my established reputation of honesty and integrity in public office eminently qualifies me as a candidate for this exalted position.

My concern over the deterioration of the business climate of Belleville, in contrast with that of other surrounding towns, poses questions as to the ability of our incumbents to cope with the problem.

Oppressive taxation engendered by wasted, inefficiency, overloaded staffs laden with friends and relatives; along with a fracturing lack of regard for the vexing problems besetting the community borders upon indifference, if not incompetency, that is further aggravated by the present archaic type of commission government which is completely devoid of centralized responsibility that regrettably contributes to the insalubrious malaise which hangs as a heavy pall over our harassed and bedraggled town and its citizenry.

The keen disappointment and dissatisfaction expressed by many concerned residents indicates a compelling need to afford the electorate an opportunity to enjoy a selective choice of candidates, rather than to be "saddled" with ineffectual incumbents who, despite their popularity and organizational strength, seem sadly lacking in the necessary talents and aptitudes which are a prerequisite for an efficiently managed town of the size of Belleville, N.J. with all its latent potentials.

My decision to become a candidate does, however, regrettably prevent my continuance of this column for the duration of the campaign, as the dictates of journalistic propriety demand.

My respect for the universally accepted and conventional rules of journalism and objective fair play to all candidates aspiring for office obviously necessitates my observance of these customary norms and precedents.

Quite naturally, I shall miss the opportunity of coming into your homes weekly, in your friendly home town newspaper, with the opportunity of expressing my views with you and trying to stimulate your concern over what is taking place about us. True! Some were only an expression of my views or opinions, a license of latitude enjoyed by columnists exclusively, denied most reporters other than editorial privilege exercised by our editor, but I hope you read and enjoyed my weekly GOLDEN COMMENTS and, irrespective of the outcome of the local election, with the approval of our publisher, I hope to be back on the same old stand again soon.

Thanks for the opportunity of serving you. It has been wonderful being your scribe all these years.

Keep up with the times by reading the Belleville Times/News.

Legal Advertisement Concerning Board of Education Election April 3, 1979, in Belleville

NOTICE OF ANNUAL SCHOOL DISTRICT ELECTION OF THE TOWN OF BELLEVILLE, IN THE COUNTY OF ESSEX, NEW JERSEY.

NOTICE IS HEREBY GIVEN to the legal voters of the School District of the Town of Belleville, in the County of Essex, New Jersey, that the annual election of the legal voters of said District for the election of THREE MEMBERS of the Board of Education and for other purposes shall be held at 2:00 o'clock P.M. on

TUESDAY, APRIL 3, 1979. The polls will remain open until 9:00 o'clock P.M., and as much longer as may be necessary to permit all the legal voters then present to vote and to cast their ballots.

The election will be held and all the legal voters of the School District will vote at the respective polling places designated below.

TWO MEMBERS WILL BE ELECTED FOR THREE YEARS.

ONE MEMBER WILL BE ELECTED FOR ONE YEAR.

At the said election will be submitted propositions for voting boxes for the following respective purposes:

FOR CURRENT EXPENSES \$7,204,035 FOR CAPITAL OUTLAY \$128,679. The total amount thought to be necessary is \$7,332,714.

The polling places for said election and their respective polling districts (described by reference to the election districts used at the last General Election) have been designated below, and no person shall vote at said election elsewhere than at the polling place designated for the election in which he or she is registered.

DATED, MARCH 22, 1979/MAY 8.

SHADES, SECRETARY.

NOTE: The term "current expenses" includes: principals' salaries, janitors' and medical inspectors' salaries, fuel, textbooks, school supplies, transportation of pupils, tuition of pupils attending schools in other districts with the consent of the Board of Education, school libraries, compensation of the Secretary of the custodian of school moneys and of attendance officers, student schools, insurance, maintenance of plant

and incidental expenses.

A member of the Board of Education must be of legal voting age, a citizen and resident of the town of Belleville for at least two years immediately preceding this or her appointment or election and must be able to read and write. He or she shall not be interested directly or indirectly in any contract with or claim against the Board.

Every citizen of the United States who is of the age of 18 years who has been permanently registered in the municipal election district at least thirty days prior to the date of the election shall be entitled to vote at the school election. Application for military or civilian absentee ballots may be made to the County Clerk.

POLLING DISTRICT NO. ONE

Polling place at the JUNIOR HIGH SCHOOL, 775 Washington Avenue, in the School District, for legal voters residing within General Election Districts Nos. WARD ONE, District 1, 2 and 3 of the TOWN OF BELLEVILLE.

POLLING DISTRICT NO. TWO

Polling place at SCHOOL EIGHT, 183 Union Avenue, in the School District, for legal voters residing within General Election Districts Nos. WARD ONE, District 4, 5 and 6 of the TOWN OF BELLEVILLE.

POLLING DISTRICT NO. THREE

Polling place at RECREATION HOUSE, 407 Jerusalem Street, in the School District, for legal voters residing within General Election Districts Nos. WARD ONE, District 7 of the TOWN OF BELLEVILLE.

POLLING DISTRICT NO. FOUR

Polling place at SCHOOL TEN, 527 Belleville Avenue, in the School District, for legal voters residing within General Election Districts Nos. WARD ONE, District 8, of the TOWN OF BELLEVILLE.

POLLING DISTRICT NO. FIVE

Polling place at SCHOOL SEVEN, 200 Passaic Avenue, in the School District, for legal voters residing within General Election Districts Nos. WARD ONE, District 9, and WARD TWO, District 12 of the TOWN OF BELLEVILLE.

POLLING DISTRICT NO. SIX

Polling place at SCHOOL TWO, Mill Street, in the School

District, for legal voters residing within General Election District No. WARD ONE, District 10, of the TOWN OF BELLEVILLE.

POLLING DISTRICT NO. SEVEN

Polling place at SCHOOL FOUR, JAMES O. SHAWNER SCHOOL, 30 Magnolia Street, in the School District, for legal voters residing within General Election District No. WARD ONE, District 11 and 12, of the TOWN OF BELLEVILLE.

POLLING DISTRICT NO. EIGHT

Polling place at SCHOOL ONE, 190 Carlondt Street, in the School District, for legal voters residing within General Election District No. WARD TWO, District 1 of the TOWN OF BELLEVILLE.

POLLING DISTRICT NO. NINE

Polling place at SCHOOL NINE, 301 Ralph Street, in the School District, for legal voters residing within General Election District No. WARD TWO, District 2 and 3, of the TOWN OF BELLEVILLE.

POLLING DISTRICT NO. TEN

Polling place at SCHOOL FIVE, 149 Adelaide Street, in the School District, for legal voters residing within General Election District No. WARD TWO, District 4, of the TOWN OF BELLEVILLE.

POLLING DISTRICT NO. ELEVEN

Polling place at AMERICAN LEONARD HALL, 621 Washington Avenue, in the School District, for legal voters residing within General Election District No. WARD TWO, District 5, of the TOWN OF BELLEVILLE.

POLLING DISTRICT NO. TWELVE

Polling place at School Three, 230 Joralemon Street, in the School District, for legal voters residing within General Election Districts Nos. WARD TWO, District 6 and 9 of the TOWN OF BELLEVILLE.

POLLING DISTRICT NO. THIRTEEN

Polling place at SENIOR HIGH SCHOOL, 190 Passaic Avenue, in the School District, for legal voters residing within General Election District No. WARD TWO, Districts 10 and 11 of the TOWN OF BELLEVILLE.

The Belleville Times

March 22, 1979

Fee: \$44.72

No. 875-88

Wilentz excellent choice

Last week Governor Brendon Byrne nominated former assemblyman Robert Wilentz to succeed Chief Justice Richard Hughes.

This act was another stroke of Byrne genius.

We have a deep affection for our present Chief Justice Hughes. Articulate and compassionate, his forced retirement at age 70 in August was expected to leave a void on the Supreme Court impossible to fill —

Hughes is a tough act to follow.

The Wilentz nomination is a fantastic choice. Able, articulate, compassionate, young, Bob Wilentz possesses all the attributes one would hope to find in the person of New Jersey's Chief Justice. To Bob Wilentz we say good luck and God bless you.

Frank A. Orecchio

the Belleville

times/news

Published every Thursday at 246 Washington Avenue, Belleville, New Jersey, 07019 Telephone: (201) 759-3200

Publisher
FRANK A. ORECCHIO

Social Editor
HELEN MAGUIRE

Kiwanis Clubs receiving Gov. Lucien Ford today

The Kiwanis Clubs of Belleville and Lyndhurst will meet today at the Sun Carlo Restaurant for a reception honoring Kiwanis Governor Lucien Ford's visit to District 13. Ford makes an annual visit to each district throughout the state.

The Belleville club returns to The Fountain next Thursday at 6:30 p.m. for the regular membership dinner meeting.

meeting.

At the last regular meeting, Kiwanis President Tony Peda entertained with members of the Toms River and Bricktown clubs. Peda and Lt. Gov. Vincent Sorrentino welcomed the guests and introduced the club's individual members before the meeting, also held at The Fountain.

Closing one school could save \$300,000

By Mike Olohan

Shutting down one school could clip \$300,000 off the educational budget, says Superintendent Dr. John Greed.

But the Belleville was including many related costs, like doctor and dentist services, axing one maintenance job and overtime pay, combining small classes by busing, using state compensatory ed money to pay regular teachers curtailing athletics and ending architectural surveys.

School Board trustees, however, take issue with Greed's conclusions despite constant public criticism that elective officials here are too evasive and lax in acting upon sensitive issues like budget-cutting.

Belleville's school budget is \$11,275,276 — even with the state imposed 6.38 percent limit on overall increases from last year's appropriations. The budget was adopted Friday by the Board of Education and now goes to voters at the April 3 referendum (see related story in today's Times/News).

TRUSTEES STRONGLY DENY that any school closings will take place next year, but say combining low-enrollment classes is necessary to save money — a stand greeted by mixed citizen emotions — usually more negative than positive overall.

Citizens appear frustrated during budget forums when trustees can't even cite approximate dollar amounts their schools will receive. The tentative budgets distributed list only proportionate amounts based on enrollment.

Several citizens have charged this type budget presentation is vague and misleading since each school's actual budget may differ widely from the amounts listed.

"Show me where my money's going," said a woman at School 2's budget forum. "All the detail will be there and all citizens can question anything they want to then," replied Board President Matt Pica.

At nine budget hearings in two months, trustees have urged residents to vote and ask questions while providing few detailed answers. Citizens praise the board's attempt to explain the budget, yet appear irritated because many questions go unanswered.

To keep within Belleville's 6.38 budget "cap," as trustees ordered, Greed says the administration axed \$100,000 from the instruction budget, \$42,000 from maintenance, \$15,000 from school operating costs, \$13,000 from fixed expenses and \$5,000 from student activities.

PARENTS CRITICIZED the board at School 2 for not moving ninth graders to the high school, stressing the move can't be avoided. Trustees noted the decision not to move them already has been made.

Trustee Mike Chieffo said "basic changes," are needed in Belleville schools, including redistricting and more vocational training programs.

When one citizen attacked the deteriorating educational and physical conditions at the Junior High, Board President Matt Pica said, "It may not be the best building color-wise and all, but I don't regret sending my children there. I would send them back to that same school," he added.

School 2 Principal Arthur Pico noted a librarian, school nurse, and physical education teacher are needed one and a half more days per week but Greed stressed cutbacks make this impossible.

A long-range planning study of Belleville's school system found about \$5.5 million is needed in building repairs or capital outlay funds to bring the schools, "up to par," according to trustee Eric Zoppi.

Greed cited a New York Times report that said Essex County residents pay 14 times more tax dollars supporting welfare and courts than do Bergen County residents — despite Bergen's mostly upper-income population compared to lower incomes here.

This contrasting of county costs implies that increasingly expensive social services, especially schools, will face more pressure to "regionalize" or combine their educational resources because of inflation.

Moslem saves church from being destroyed

Continued from page one.

Rev. Bliss said he was in an alley once when he saw a man struggling to sit up. He went over and "realizing he was possessed of evil demons, I placed my hand on his head and called out that he be healed in the name of God."

"In front of three Moslem witnesses, God cured him from evil spirits that were destroying his body," Rev. Bliss said, remembering the incident vividly. He said converting Moslems to Christianity is very difficult because of a small staff, scattered population and limited transportation. Most of Iran is undeveloped, he said, noting most people farm and do tough, often brutal physical labor to survive.

Rev. Bliss was not interested in and declined comment on Iran's political upheaval. He came to the United States in April and noted "there had been a terrible unrest building in Iran for several years."

The Blesses lost their three children in a car crash in Iran in 1969 but have since adopted a baby girl from Bangladesh (East Pakistan). After his children's death, Bliss said, "Our faith brought us closer to God. What God allowed was for his purpose. He rushed in with his love after this happened."

Bliss said teaching Christianity in Iran "is like being a light, a light in the darkness."

He said he and his wife Gladys are hoping to go back to Iran in July. "I wonder now though...if we'll ever be able to get back," he said quietly.

Group will feature Belleville magician

John Cozzarelli, noted local magician, will highlight the Mary V. Senator Civic & Welfare Association regular meeting Wednesday at 8:15 p.m. at the Chandelier Restaurant.

Cozzarelli, 1977 Belleville High School graduate, will perform various feats of magic and illusion which he originally created.

NOW AT
KASTNER'S



(You Must See It!)
Kastner's Furniture
492 FRANKLIN AVE. 667-1364 NUTLEY
(FREE PARKING)

Sal's Deli for all your Hot and Cold Catering

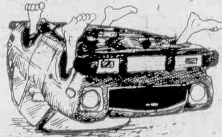
Food Market

Boiled Ham	\$2.19 lb.	Kirsch Soda & Codd Soda 45¢ (32 oz.)	
Imported Swiss Cheese	\$2.19 lb.	Sausage	\$1.99 lb.
Hamburger Patties	\$1.99 lb.	Roast Beef	\$3.99 lb.

Anything under 1/2 lb. at Regular Price
Open Sundays — 8 a.m. to 3 p.m.
18 Washington Ave., Nutley — 661-1147

Belleville Residents:
You are invited to attend an Open House for Sam Petracca, Candidate for the Belleville Board of Education, Saturday, March 31, 1979, beginning at 5 p.m. — 1112 Refreshments: 16 Aruther St. Bell.
Paid for by the Citizens Committee for Sam Petracca

LET US GET YOUR CAR



BACK ON ITS FEET!!

TOYOTA TROUBLES?

Most repairs in one day!

New + rebuilt TOYOTA parts in stock



OFFICIAL
NEW JERSEY
RE-INSPECTION
STATION
LIC # 1303

EXTRA GOOD AUTOMOTIVE

267 RIVER ROAD

NORTH ARLINGTON, 998-4651

Seven Blocks North of the Belleville Bridge

"Toyota Our Specialty"

MECHANICS CERTIFIED BY NATIONAL INSTITUTE FOR AUTOMOTIVE SERVICE EXCELLENCE

THE
NEW

GIOVANNI'S

180 Franklin Ave. (Next to Dante's Bakery)

ITALIAN RESTAURANT & PIZZERIA

Specializing in Fine Italian Cooking

FREE DELIVERY

6 DAYS A WEEK

667-6477

We Deliver 6 Days A Week

Ask About Our Catering Service



MEAT BUYERS OUTLET

"WE ARE MEAT DISCOUNTERS"

758 McCarter Highway, Newark, N.J.

2 Blocks From Raymond Blvd. Right behind Penn Station

TEL: 623-3350

— STORE HOURS —

Mon.-Thurs. 8 a.m.-6 p.m.
Fri. 8-7 Sat. 8-6 Sun. 8-12

NEWARK MEAT RIOT!

BEAT THE HIGH COST OF LIVING

FILL YOUR FREEZER NOW!
COME IN & COMPARE

KING SIZE PLAN

ROUND OF BEEF

CONSISTS OF:
STEAKS, TOP, BOT, EYE
RD., STEW, GROUND RD.

CHUCK BLOCK

CONSISTS OF STEAK, STEW
CALT, ROASTS

SIRLOIN OF BEEF

CONSISTS OF STEAK, LONDON
BROIL, ROASTS.

PRIME RIB OF BEEF

CONSISTS OF RIB
ROAST, STEAKS, SHORT
RIBS, STEW.

10 lb. Short Ribs
10 lb. Beef Franks
10 lb. Beef Patties
10 lb. Chicken Legs
10 lb. Chicken Wings
10 lb. Pork Chops
10 lb. Spare Ribs
5 lb. Ital Cutlets
5 lb. Bacon
5 lb. Link Sausage
10 lb. Peppered Steak
5 lb. Beef Liver
10 lb. Chicken Back

\$399.50
FREE 15 lb.
BONUS Chickens

SUPER SUNDAY SPECIALS!

shoulder
LAMB CHOPS 1.39 lb.

BEEF
PATTIES 99¢ lb.

CHICKEN LEGS
65¢ a lb.
QUARTERS

CHICKEN BREASTS
89¢ a lb.
QUARTERS

SALE - SALE

This Week Only
STEAKS and ROASTS

\$1.79 a lb.

Your Choice of
SHOULDER or CHUCK FILLET
STEAK

SHOULDER or CHUCK ROAST

only \$1.79 a lb.

PRIME RIBS OF BEEF

CONSISTS OF STEAKS, RIB ROASTS,
SHORT RIBS.

\$1.69 lb.

5 lb. SPECIALS

PORK CHOPS LOIN RIB END 6.45
PORK SPARE RIBS 6.45
ALL MEAT FRANKS 5.45
BEEF PATTIES 5.45
BEEF LIVER 3.95

TRIMMED CHUCK BLOCK OF BEEF

CONSIST OF:
STEAK ROAST
STEW CHUCK BEEF

\$1.39 lb.

FREE! pkg. Bacon

AVG. WT. 50-70 LBS.

SHOULDER BEEF CLOD
CONSISTS OF: ROASTS, STEAKS, CHOP MEAT

\$1.69 a lb.

SHELL OF BEEF

Whole \$1.75 a lb.

CHUCK ROLLS

CONSIST OF: ROASTS, STEAKS, STEW,
CHOPPED BEEF, BEEF RIBS

\$1.59 lb.

FREE! pkg. Bacon

AVG. WT. 30-40 LBS

CHICKEN WINGS

\$1.68 lb.

15-lb. bag

CHICKEN LEGS

\$1.68 lb.

15-lb. bag

Hind Quarter BEEF

CONSISTS OF: T-BONE STEAKS, BOT., TOP., EYE., RD., SIRLOIN STEAKS, LONDON BROIL, CHOP MEAT, STEW BEEF, FLANK STEAK, & FILET MIGNON

\$1.39 lb.

LOINS OF PORK

\$1.29 a lb.

Whole/Half

BOLOGNA ALL MEAT

FRANKS ALL MEAT

SPICED HAM OR LIVERWURST

99¢

BUY THE PIECE

NOT RESPONSIBLE FOR TYPOGRAPHICAL ERRORS. ALL MEATS SOLD AT HANGING WEIGHT. WE RESERVE THE RIGHT TO LIMIT QUANTITIES.

QUEEN SIZE PLAN***

NECK OF BEEF

CONSISTS OF:
STEAKS, ROASTS, STEW, CHOPPED BEEF, CHUCK BEEF

\$1.59 lb.

FREE! pkg. Bacon

AVG. WT. 30-40 LBS

10 lb. Beef Franks

10 lb. Pork Chops

10 lb. Spare Ribs

5 lb. Bacon

10 lb. Chicken Legs

10 lb. Chicken Wings

5 lb. Leg of Lamb

5 lb. Short Ribs

5 lb. Beef Patties

12 lb. Whole Chickens

FREE FREE BONUS

10 lb. CHICKENS

5 lb. Bologna

5 lb. Spiced Ham

5 lb. Beef Sausage

5 lb. Lamb Chops

8 lb. Smkd. Ham

whole or half

\$325.50



JOHN P. DAILEY

Dailey seeks funds in Boy Scout drive

John P. Dailey, chairman of the Board of First DeWitt Savings and Loan of Belleville, Hopatcong, has been appointed chairman of the sustaining membership drive of the Essex County Council, Belleville District, Boy Scouts of America.

Dailey, a well-known Belleville resident, has in his long career, been active in civic activities throughout Essex County and the State of New Jersey. For almost two decades, he was vice president of the Robert Treat Boy Scout Council which, in a regional development, ultimately

became the Essex County Council. Dailey's career goes back to World War I when he enlisted with the United States Navy. Returning home, he became associated with financial institutions in Belleville and just prior to World War II, became director of personnel and labor relations at Wallace and Tiernan.

His expertise and activity in civic, fraternal, industrial and military affairs, led to a 1938 Washington, D.C., appointment to the New Jersey Selective Service System and later to the New Jersey Appeals Board as a specialist in industrial deferment.

Clifton HS class '48 in need of addresses

Clifton High School Class of 1948 is planning a reunion May 19 at Regency House, Pompton Plains. Several people have not responded, however, and the planning committee is still searching the whereabouts of several classmates.

Anyone wishing more information or able to supply addresses for the following are asked to contact Marie Ermenville Grey at 226-8356.

Lawrence Anderson, Doris Baker, Janet Baxter, Dolores Benjamin, Betty Christensen, John Drach, Emil Dubutowski, Janis Forbes, Margaret Franek, Francis Hofman, Dorothea Jacobetz, David Kennedy, Joyce King, Dorothy Klaus, Angela Leonardi, David Nelson, Josephine Ruggiero, Dorothy Ryan, Doris Seely, Ralph Shauger, John Smith, Kenneth Stewart, Antonette Tolingo, Concetta Visalli, Anita Winkler, Harriet Zeim and Paul Zalinsky.

NOW AT
KASTNER'S



(You Must See It!)

Kastner's Furniture
492 FRANKLIN AVE. 687-1384 NUTLEY
FREE PARKING

Stork Club

David Wohlmann

A son, David Matthew was bc to Mr. and Mrs. John Wohlmann - Bloomfield Jan. 5 at Columbus Hospital. Birth weight was 9 lbs. 7 ozs. He joins John Michael, 2.

Mrs. Wohlmann is the former Christine Barbone, daughter of Mr. and Mrs. Michael Barbone of Belleville. Mr. Wohlmann is the son of Mr. and Mrs. John Wohlmann of Belleville.

Deana Marie Addis

A second child, a daughter, Deana Marie was born to Mr. and Mrs. William S. Addis Jr. of 106 Brighton Ave. Jan. 11 at Columbus Hospital. Birth weight was 8 lbs. 6 ozs. She joins Billy, two and a half.

Mrs. Addis is the former Michele Zoppi, daughter of Mr. and Mrs. Ernest Zoppi of Belleville. Mr. Addis, son of Mrs. Geraldine Addis of Clifton and the late Mr. William Addis, is with Ulrich Copper Inc.

Peter Thomas Cullen

A second child, a son, Peter Thomas was born to Mr. and Mrs. Joseph M. Cullen of Livingston Jan. 23 at St. Barnabas Medical Center. Birth weight was 9 lbs. He joins Joseph, 3.

Mrs. Cullen is the former Julie Guarino, daughter of Mr. and Mrs. Peter Guarino of Belleville. Mr. Cullen is the son of Mrs. John Cullen of Newark.

Danielle Marie Torsiello

A second child, a daughter, Danielle Marie was born to Mr. and Mrs. Michael Torsiello of 115 Ralph Street Jan. 24 at Clara Maass Memorial Hospital. Birth weight was 7 lbs. 5 ozs. She joins Telly Michael, three and a half.

Mrs. Torsiello is the former Diane Benkoski, daughter of Mr. and Mrs. Irvin Benkoski of Irvington. Mr. Torsiello, son of Mr. and Mrs. Robert Bossett of North Arlington, is an exterminator with Ace Exterminating Co., Kearny.

Marisa Nicolette

A first child, a daughter, Marisa was born to Mr. and Mrs. Richard Nicolette of Verona Feb. 14 at Clara Maass Memorial Hospital. Birth weight was 7 lbs. 4 ozs.

Mrs. Nicolette is the former Lori Rogers, daughter of Mrs. Margaret Rogers of Belleville. Mr. Nicolette, son of Mr. and Mrs. Peter Nicolette of Belleville, is the owner of P. Nicolette and Son, landscape contractors.

Beth Anne Zampino

A second child, a daughter, Beth Anne was born to Mr. and Mrs. Thomas Zampino of 25 Princeton Terrace Feb. 21 at Clara Maass Memorial Hospital. Birth weight was 6 lbs. 13 ozs. She joins Alison, four and a half.

Mrs. Zampino is the former Sandra Barrett, daughter of Mr. and Mrs. James P. Barrett of Kearny. Mr. Zampino, son of Edward Zampino of Belleville and Mrs. Marge Zampino of West New York, is an attorney with Gaccione, Pomato, Patton and Beck.

TERMITES
Swarming -
BLISS

BE SURE... BLISS has been serving the Home Owner for 97 YEARS. For a complete FREE INSPECTION of your home by a Termit Control Expert, supervised by the first technical staff, phone our nearest local office.

676-8888

BLISS
TERMIT CONTROL
Div. Bliss Exterminator Company - Est. 1882
One of the Oldest & Largest

A GRAND UNION OF Spring Things

... WITH GREEN LABEL SAVINGS AND RED LABEL SPECIALS!

Gov't. Grade 'A' Marval Turkey Breast

Basted All White Meat 4 to 7 Lbs. **1.27** Lb.

With portion of back and wing meat and neck skin

U.S.D.A. Choice - Boneless Beef

Shoulder Steak **1.99** Lb.

U.S.D.A. Choice - Boneless Beef

Fresh - Domestic

Shoulder Lamb Chops **2.19** Lb.

Blade Bone

U.S.D.A. Choice - Boneless Beef

Top Chuck **2.04** Lb.

Beef Stew **2.04** Lb.

Change of Menu

Kielbasa **1.89** Lb.

Smoked Butts **1.89** Lb.

U.S.D.A. Choice - Boneless Beef

Rib Eye Steak **3.99** Lb.

Well Trimmed

Patrick Cudahy

Canned Ham **5.99** Lb.

3 Can

U.S.D.A. Choice - Boneless Beef

Fillet Steak **1.99** Lb.

Cubed Steak **2.04** Lb.

Flank Steak **2.99** Lb.

Regular or Diet

C&C Cola **49¢** Half Gal. Btl.

With coupon below and purchase of 7.50 or more

General Electric

Light Bulbs **50¢ Off**

With coupon below and purchase of 7.50 or more

Grand Union

Tomato Soup **1.00** 10-oz. Cans

6 Cans

Whole Kernel

Freshpak Corn **4.100** 1-Lb. 1-oz. Cans

U.S.D.A. Choice - Boneless Beef

Beef Rib Eye **2.99** Lb.

Whole Untrimmed

U.S.D.A. Choice - Boneless Beef

Shoulder Clod **1.69** Lb.

Whole Untrimmed

U.S.D.A. Choice - Boneless Beef

Turkey Wings **69¢** Fin. Lb.

Tails or Necks **49¢** Fin. Lb.

U.S.D.A. Choice - Boneless Beef

Flounder Fillets **3.29** Lb.

Fresh Blue Fish **1.89** Lb.

Red Snapper **2.99** Lb.

Fresh Cod Steaks **1.99** Lb.

Cod Fillet **1.89** Lb.

Fish Sticks **1.99** Lb.

U.S.D.A. Choice - Boneless Beef

Sliced Bacon **1.49** 1-Lb. Pkg.

Franks **.89¢** 1-Lb. Pkg.

Bologna **.79¢** 1-Lb. Pkg.

U.S.D.A. Choice - Boneless Beef

Pineapples **49¢** 3 Diamond

Corn **4.100** 4-oz. Cans

U.S.D.A. Choice - Boneless Beef

Beans **4.100** 4-oz. Cans

Coffee Mate **1.29** 1-Lb. Pkg.

Pan Shakes **.49¢** 7-oz. Pkg.

U.S.D.A. Choice - Boneless Beef

Wheat Bread **2.99** 2-Lb. Loaves

Chock o' Nuts **1.99** 1-Lb. Cans

U.S.D.A. Choice - Boneless Beef

Mac. & Cheese **79¢** 14-oz. Pkg.

Kraft Singles **1.79** 1-Lb. Pkg.

Peanut Butter **1.15** 1-Lb. Jar

U.S.D.A. Choice - Boneless Beef

Ice Cream **1.69** 1-Lb. Cans

Ocean Spray **3.100** 1-Lb. Cans

Broccoli **99¢** 1-Lb. Cans

Waffles **65¢** 10-oz. Cans

Tree Tavern **1.39** 1-Lb. Cans

Banquet **1.29** 1-Lb. Cans

Perx **65¢** 2-Lb. Cans

Taste O' Sea **1.19** 1-Lb. Cans

U.S.D.A. Choice - Boneless Beef

Figaro Tuna **3.79** 3-Lb. Cans

Electrasol **1.89** 4-Lb. Cans

U.S.D.A. Choice - Boneless Beef

Whipped Topping **49¢** 8-oz. Cont.

U.S.D.A. Choice - Boneless Beef

Cole Slaw **49¢** 1-Lb. Cans

Cheese **99¢** 1-Lb. Cans

Rice Pudding **69¢** 1-Lb. Cans

Olive Loaf **99¢** 1-Lb. Cans

Meat Balls **99¢** 1-Lb. Cans

Olive Salad **1.39** 1-Lb. Cans

Herring **1.09** 1-Lb. Cans

Tuna Salad **1.09** 1-Lb. Cans

U.S.D.A. Choice - Boneless Beef

Kleenex **59¢** 6-oz. Pkg.

Kraft French **59¢** 6-oz. Pkg.

Minute Rice **59¢** 6-oz. Pkg.

Coffee **1.99** 1-Lb. Pkg.

U.S.D.A. Choice - Boneless Beef

Tuna Fish **69¢** 6-oz. Pkg.

Spaghetti **39¢** 1-Lb. Pkg.

Grape Jelly **1.09** 2-Lb. Jar

U.S.D.A. Choice - Boneless Beef

Asparagus **99¢** Lb.

Grapefruit **6.100** 6-oz. Pkg.

Red Radishes **2.29** 2-Lb. Pkg.

Pascal Celery **59¢** 1-Lb. Pkg.

Fertilizer **40.38** 40-Lb. Bag

U.S.D.A. Choice - Boneless Beef

Pineapples **99¢** 1-Lb. Cans

Oranges **99¢** 1-Lb. Cans

Foliage Plants **1.49** 1-Lb. Pkg.

Grass Seed **3.49** 3-Lb. Bag

U.S.D.A. Choice - Boneless Beef

Body on Tap **1.69** 1-Lb. Cans

Excedrin **1.19** 1-Lb. Cans

Roll-On **1.19** 1-Lb. Cans

Massengill **59¢** 1-Lb. Cans

U.S.D.A. Choice - Boneless Beef

Sesame St. Library **1.99** 1-Lb. Cans

U.S.D.A. Choice - Boneless Beef

Cannon Hand Towel **2.29** 1-Lb. Cans

Prices effective Sunday, Mar. 18 thru Saturday, Mar. 24 at all Grand Union stores in New Jersey (except Ewing and Hamilton), Rockland and Orange Counties. In order to assure a sufficient quantity of sale, all our customers we reserve the right to limit sales to 3 packages of any item unless otherwise noted. Not responsible for typographical errors.

VFW auxiliary readies another towel social

VFW Ladies Auxiliary will sponsor a towel social next Tuesday at 8 p.m. in Stuart E. Edgar Post 493 at 271 Washington Ave.

Admission to the event, which is open to the public, is a dish towel.

Cake and coffee will be served.

Chairmen are Joan Simko and Rose Thompson. Stella Palkewicz and Theresa Ferrante were the hostesses for the March meeting.

School 9 PTA planning auction for Wednesday

School 9 PTA will sponsor a Chinese auction next Wednesday at 7 p.m. in the school auditorium at 301 Ralph St. Admission is \$1.50 and includes refreshments. Reserved tables are available. Tickets are limited. For reservations, call 759-3379.

Catholic woman's club fashion show Tuesday

The a'Kempis of New Jersey, a Catholic women's club organized in 1914, will hold its annual spring luncheon and fashion show next Tuesday noon at Mayfair Farms, West Orange.

Fashions will be presented by Diamond's of Orange and Dee's of Essex Green Shopping Plaza, West Orange. Proceeds will be distributed to the club's various charities.

American Legion Post blood bank is Monday

Belleville American Legion Post 105 is sponsoring a blood bank next Monday from 4 until 8 p.m. at the postrooms, 621 Washington Ave.

Legionnaires welcome everyone willing and physically capable to contribute. Citizens can help the post to assist the community when an emergency occurs.

Joe Bradley, chairman of the blood bank, is arranging appointments for Monday. He can be reached weekdays between 2 and 6 p.m. and on weekends from 12 noon to 12 midnight at 759-9650.

Free refreshments will be available for donors.



Jennie Nardone and Vincent DePaul Jr.

Nardone-DePaul troth announced in Belleville

Mr. and Mrs. Salvatore Nardone of 39 Eugene Place announce the engagement of their daughter, Jennie, to Vincent DePaul Jr., son of Mr. and Mrs. Vincent DePaul Sr. of Union.

The troth was made known March 7 at Chandelier Restaurant here in Belleville.

Miss Nardone, an alumna of Belleville High School, is office manager with BNL Insurance Company.

Mr. DePaul, an alumnus of Union High School, is a Sears service technician.

The wedding will be held in May 1980.

Belleville women win several prizes

The Evening Membership Department of the Woman's Club of Belleville came away with five awards from the Eighth District Spring conference and Craft contest, hosted by Clifton Feb. 18 at the Clifton Elks Club.

Miss Mildred Weislogel captured a second prize in recycled material for a lamp shade made of egg cartons and a third award in the pot-pourri category for a macrame owl.

Members from Belleville attending the conference included Mrs. R. Shafter, department chairman, and Mrs. R. Drake, Mrs. A. Falasano, Miss Weislogel, Mrs. E. Bahr from the general club and Mrs. S. Frank.

Mrs. John Schenke won first prize in small toys, for a miniature cradle. Mrs. Richard Drake, first prize for a stained ceramic Duck and third for glazed ceramics.

Christy Ann Piegaro to wed Frank Mazur

Mr. and Mrs. James L. Piegaro of Nutley announce the engagement of their daughter, Christy Ann, to Frank Mazur of Belleville.

Miss Piegaro, a graduate of Nutley High School and Essex County Vocational School of Hair Design, is with Park Avenue Hair-cutting Studio, Nutley.

Mr. Mazur, son of Mrs. Anna Mazur and the late Mr. Mazur, an alumnus of Belleville High School and Bloomfield College, is with the U.S. Postal Department, Nutley. He also served as a sergeant in the Vietnam War.

A formal announcement was made this month at Beppy's Restaurant, Newark. A November wedding is planned.



Miss Christy Ann Piegaro

Masino-Baglione engagement told

Mr. and Mrs. Gilbert Masino of 218 Franklin Ave., Nutley, announce the engagement of their daughter, Mary E., to G. William Baglione Jr., son of Mr. and Mrs. G. William Baglione Sr. of Bloomfield.

Miss Masino attended Nutley High School. Mr. Baglione is an alumnus of Belleville High School. The wedding will be held in 1980.

Navy offering sophomores 2-year college scholarships

The Navy has announced that college sophomores who qualify may apply for a two-year Naval Reserve Officers Training Corps (NROTC) Scholarship covering their junior and senior years, leading to an officer's commission in the Navy.

Deadline for applications for the coming semester is April 1.

Montclair Woman's Club
ANTIQUE SHOW
82 UNION STREET
MAR. 23 11 to 9 PM
MAR. 24 11 to 6 PM
Adm. \$1.50 with adv. \$1.25
Snack Bar

Umberto's Corner

Dear Umberto,

My daughter studied Beauty Culture at Vocational School for three years. She is such an excellent hairdresser that she does hair for our whole family plus her friends. During the day, however, she is a checker at a supermarket.

We both want her to be a beautician but she is afraid to take the test because everyone told her it was difficult. Some questions on the test require answers about parts of the body usually understood by a physician. Is the test so hard?

Mother of Afraid Beautician

Dear Mother,

Yes, we do study about the whole body, and for good reason. I myself, thought it unnecessary at first. In Europe this is not required. Originally I took it to learn the chemical terms. By the end of the course I realized it was essential.

We must be aware of what the chemicals on the head can do to other parts of the body, internally as well as externally. Tell your daughter to take the test because she must answer 75 questions out of 100 correctly and they are just plain common sense. Good luck to her!

Umberto of Naples

547 Haircutting and Coiffures
549 Unisex Haircutting Extension
Washington Ave. Belleville 759-4900
FREE PARKING at 557 Washington Ave.

Deanna's
V.I.P. Hair Boutique
Dee La Conit, Prop.
529 Joralemon St.
Belleville, N.J. 759-6633

NOW AVAILABLE

- Expert Unisex Work
- All types Waxing
- Painless Ear Piercing
- Hennas
- "Pretty Feet" Pedicures
- Special Attention to the Younger Child
- Senior Citizens

Specials - Tues. & Wed.
**FOR A GREAT LOOK,
A GREAT FEELING, A BALANCED
MOISTURE LEVEL IS CRITICAL.**

MOISTURE GUARANTEED
MQ

The Belleville Times/News
777 Bloomfield Avenue
Nutley, N.J. 07110

1 year gift subscription *\$8.00
2 year gift subscription *\$16.00

Please send a gift subscription of The Belleville Times/News by mail to:

Name (Please print) _____
Address _____
City _____ State _____ Zip _____

My check is enclosed in the amount of \$ _____
Please have my gift read from: _____

Name _____
Address _____
City _____ State _____ Zip _____

WE FEATURE

Heavenly WEDDING STATIONERY

By *Prints Charming*

- INVITATIONS & ANNOUNCEMENTS
- LUNCHEON INVITATIONS
- GIFT ACKNOWLEDGEMENTS
- CALLING CARDS
- PERSONALIZED STATIONERY
- NAPKINS - MATCHBOOKS

Elegance at low cost... a beautiful selection of wedding stationery with professional advice on proper etiquette and procedure. See our selection in the very Traditional and smartly Modern motifs.

Beautifully Thermographed Or Genuine Copper Plate Engraved

614 Franklin Avenue
Nutley
Hours: 10-5:30
Closed Monday

667-3121



Fred Patrick Corvi and Mary Ann Nolter

Mary Ann Nolter will wed Fred Patrick Corvi in June

Mr. and Mrs. John Nolter of 615 Washington Ave., Belleville, announce the engagement of their daughter, Mary Ann, to Fred Patrick Corvi, of Belleville, son of Fred J. Corvi of 12 Prospect St., Nutley and the late Mrs. Carmella Corvi.

Miss Nolter, an alumna of Belleville High School, is with Prudential Insurance Co., Newark.

Mr. Corvi, a graduate of Nutley High School, is with Coordinate Design Associates as a piping modelmaker.

The troth was made known Nov. 18 and the wedding will take place in June.

SUSAN VALENZA OPTICIAN

165 Franklin Ave., Nutley

opposite Gantner's — 667-0444

***FREE TINTING**

ENGRAVING 1/2 REGULAR PRICE

* on complete job - (plastic lens only)

"We Really Clean Cars Differently"

TIP TOP

TIP TOP CAR WASH
485 Ridge Rd. N. Arlington, N.J. 991-3629

CALL FOR APPOINTMENT

Open 7 DAYS A WEEK
7:45-5:30 P.M.
Sundays & Holidays 7:30-3 P.M.

SALT DAMAGE?
Time for custom polish and wax, vinyl roof, interior shampoo.

Mountainside linked to library computer

Doctors, medical residents, nurses and other health care professionals at Mountainside Hospital now have easy access to hundreds of thousands of health care and medical references and facts through a computerized system that links the institution's medical library with the National Library of Medicine in Bethesda, Md.

The computerized system is called the "On-Line Network," and includes a series of keyboard terminals located at approximately 1,000 hospitals, corporations and libraries throughout the United States.

When a Mountainside physician requests information, for example, on the surgical treatment of breast cancer, Mountainside's medical librarian, Jo-Anne Searle who is specially trained to use the system, connects the hospital's terminal to the Maryland computer banks by dialing a special telephone number and attaching the phone receiver to the terminal. She then carries on a "dialog" with the computer by typing in on the terminal keyboard the signals needed for the computer to search data banks for the requested information.

A teletype device which is part of the terminal prints out the information which may include only a list of the titles, authors and publication sources of journal articles on the subject or the computer can be programmed to give a short summary of each reference retrieved.

MAIN ADVANTAGE of the system is that it saves time and labor of a manual search through many medical indexes, says Searle. The computerized network supplies within a matter of minutes a bibliography of reference sources that would take hours of a librarian's time.

When the printed bibliography is taken off the terminal, the doctor or

other requester selects references which best suit his or her needs. If the requester would like to read the entire journal article, Searle will look it up.

The Maryland computers consist of many data bases from which information can be retrieved. For example, the request for information on the surgical treatment of breast cancer would most likely be fed by the librarian through computer signals into the CANCERLIT (cancer literature on-line) data base which contains more than 85,000 references dealing with various aspects of cancer.

Other data bases include MEDLINE which contains references to biomedical journal articles. TOXLINE (toxicology information on-line) is a collection of nearly 400,000 references on published human and animal toxicity studies, effects of environmental chemicals and pollutants and adverse drug reactions. Currently, there are ten other on-line data bases dealing with different medical areas.

Another advantage of having a terminal in the hospital is that the Maryland computer banks are updated daily. A manual search through medical indexes would not be as current since the indexes must be printed and mailed, a process which takes at least six weeks.



Important Connection — Medical Librarian Jo-Anne Searle operates Mountainside's terminal which connects the hospital's library with the National Library of Medicine in Bethesda, Md.

Belleville Juniors present rock n' roll

"We Believe In Music" was the theme of yesterday's festival of Women's Club's Evening Departments in which Belleville's unit presented a rock 'n' roll segment.

The festival, held at Peakness Reformed Church, Wayne, featured seven area Junior Woman's Clubs participating in the Northern Regional Music Festival of the New Jersey State Federation of Women's Clubs-Junior Membership Department.

Belleville Juniors also gave yesterday's program to a Lyndhurst senior citizens group.

CORNER DELI		
Jug Milk \$1 ⁶⁷ gal.		
Domestic Lean Boiled Ham	\$2 ³⁹ lb.	Bologna \$1 ⁵⁹ lb.
Liverwurst \$1 ⁴⁹ lb.	Turkey Breast \$2 ⁸⁹ lb.	C&C Cola 79¢ ½ gal.
(prices pertain to any part of a pound)		
Purex Bleach 59¢ gal.	Heinz Catsup 49¢ 14 oz.	Morton's Salt 21¢ 26 oz.
Tide Detergent 67¢ 20 oz.	Nabisco Nilla Wafers 53¢ 7½ oz.	
Fresh Buns Every Sunday		
759-9797 STOP IN: Have a free cup of coffee		
560 Union Ave.- Cor. Greylock Pkwy. Belleville, N.J.		

Joseph Lordi man of year at Don's 21

Joseph Lordi, the often honored chairman of the New Jersey Casino Gambling Commission, has been named Man of the Year by Don's 21, the Newark restaurant that each year celebrates the Feast of St. Joseph.

The award was presented during the 10th annual dinner-festival Monday night.

Don's 21, located at 1034 McCarter Highway, has turned the annual affair into one of the restaurant's most popular events. At the entrance of the restaurant is a statue of St. Joseph. Many patrons offer a prayer and make contributions. The money later is distributed by Don Francello of Nutley, owner-host of Don's 21, to charitable organizations.

Lordi, a former Essex County prosecutor and one time head of the Alcoholic Beverage Commission, has been assigned the task of controlling operations of the casino gambling industry in Atlantic City.

As is customary Lordi was presented with a statue of St. Joseph.

A Feast of St. Joseph Revue was produced at the dinner by Sal Forell. His group featured dances, songs and comedy.

Francello saw to it that the customary basket of zeppole, the Italian pastry delicacy, was on every table. A staff of 55 provided swift and courteous service.

OPEN 7 DAYS — 7 A.M. TILL MIDNIGHT
498 UNION AVENUE, BELLEVILLE
10 SPRING DELL, RUTHERFORD
215 RIDGE ROAD, NO. ARLINGTON
1316 MAIN AVE., CLIFTON



WE ALSO CARRY:

- NEWSPAPERS
- MAGAZINES
- CANDY
- CAKE
- DELI
- FROZEN FOOD
- ICE CREAM
- ICE
- MILK
- GROCERIES
- SNACKS
- DAIRY PRODUCTS
- SODA
- NON-FOODS
- HEALTH AIDS
- BEAUTY AIDS
- COOKIES
- BREAD
- PASTRIES
- CIGARETTES
- FILM & FLASH
- HOUSEHOLD PRODUCTS

Aunt Martha's BREAD 39¢ Large Loaf

FOREST DAIRY PLASTIC GALLON MILK LO-FAT 1⁶⁹

MARCH MEANS DAIRY SAVINGS

SKIM MILK ½ Gal 79¢

CHOCOLATE MILK Plastic Gallon 1⁸⁹

TUSCAN YOGURT 4 for \$1⁰⁰

TUSCAN WHIP 15 Oz. 1³⁹

Florida Fresh ORANGE JUICE Qts. 2/99¢

IMPERIAL MARGARINE 2 8 oz. Tubs 69¢

LE SHAKE 89¢

GATORADE Reg. or Orange 2/99¢

PHILADELPHIA CREAM CHEESE 3 Oz. 3/\$1.

FOUR QUARTERS BUTTER 1³⁹

LAND O LAKES AMERICAN CHEESE ½ lb. 79¢

HUNGRY JACK BISCUITS 49¢

FOREST EXTRA LARGE EGGS 69¢

BONNIE BROOK WATER Gallons 2/99¢

PREMIUM SWISS CHEESE ½ lb. 59¢

YOUR CHOICE OF SALADS

- Cucumber Salad 99¢
- Beet Salad 99¢
- Three Bean Salad 99¢
- Choc. Pudding 99¢
- Fruit Gelatin 79¢
- Shrimp/Egg Rolls 30¢
- Potato Knishes 30¢
- Potato Salad 69¢
- Pickles 29¢
- Health Salad 69¢
- Egg & Potato Salad 79¢
- Egg Salad 17¢
- Cole Slaw 69¢
- Shrimp Salad 27¢
- Tuna Salad 23¢
- Chopped Herring 18¢
- Olive Salad 13¢
- Cheese Cake 23¢
- Macaroni Salad 69¢
- Rice Pudding 89¢
- Tapioca 89¢
- Baked Beans 69¢
- Ziti 18¢
- Meatballs 18¢
- Mac. & Cheese 89¢

WIN A COLOR TV!
Come in to any
FOREST DAIRY
COLD CUT CENTER
and enter the "Name Our Cow" contest
DETAILS AT THE STORE
NO PURCHASE NECESSARY



We reserve the right to limit quantities

SPECIALTIES
AVAILABLE
HOT OR COLD

SAVE
USE THIS
COUPON!
SPECIAL MARCH
OFFER

RENT-A-CAR
FROM \$
BY THE
DAY

8

ALSO LOW
MONTHLY &
WEEKLY RATES
AVAILABLE

Call 746-2300
CLAIRIDGE
LINCOLN-MERCURY
4 LACKAWANNA PLAZA
Near RR Station MONTCLAIR

obituaries

Max W. Schilling; retired grocer, 86

A service was held March 14 for Max W. Schilling, 86, who died March 11 at United Hospital of Newark.

Born in Germany, Mr. Schilling lived in Jersey City before moving to Belleville 11 years ago. He was a retired self-employed grocer.

Mr. Schilling was a member of Hudson Masnoic Lodge 72, Secaucus.

Surviving are his daughter, Mrs. Eleanor Gross of Belleville; two brothers, Gus of Hoboken and Fred of Toms River, and two grandchildren.

Arrangements were handled by the Johnesee Nutley Home for Funerals. Interment was in Fairview Cemetery, Fairview.

Frances Trignano dies at 51; formerly resided in Belleville

A Mass was offered at Holy Family Church March 13 for Frances Trignano, 51, who died March 10 at St. Barnabus Hospital, Livingston.

Born in Newark, Mrs. Trignano lived in Belleville before moving to Nutley 19 years ago. She was an accountant for International Telephone and Telegraph, Nutley.

Surviving are her husband, Anthony, and a sister, Mrs. Mary Sico of Totowa.

Arrangements were handled by the S.W. Brown and Son Funeral Home, Nutley. Interment was in Glendale Cemetery, Bloomfield.

A. Pirchio, 65; postal worker

A Mass was offered at Holy Family Church Monday for Anthony Pirchio, 65, who died a week ago today at Clara Maass Memorial Hospital.

Born in Jersey City, Mr. Pirchio lived in Nutley three years. He worked maintenance worker for the U.S. Postal Service five years after 40 years as a self-employed barber in Jersey City.

Surviving are his wife, Dorothy; a son, Anthony of Piscataway; five daughters, Miss Denise of Nutley, Mrs. Dorothy DelGrande of Belleville, Mrs. Angelo Iorio, Mrs. Rosemary DeRosa and Mrs. Ruth Ann Cherence, all of Nutley, and 13 grandchildren.

Arrangements were handled by the S.W. Brown and Son Funeral Home. Interment was in Holy Cross Cemetery, North Arlington.

Thomas Ciccarella; worked in Belleville

A service was held March 15 for Thomas Peter Ciccarella, 56, who died March 12 at Clara Maass Memorial Hospital.

Mr. Ciccarella, a lifelong Nutley resident, was a truck body builder for Fairfield Truck Body, Belleville.

A World War II veteran, Mr. Ciccarella was a member of Nutley AMVET Post 30.

Surviving are his wife, Mary; a daughter, Mrs. Mary Ann Calabro of Bloomfield; two sons, Thomas Joseph of Belleville and David Allen of Nutley; two brothers, Michael and Samuel, both of Nutley, and a sister, Miss Maria of Nutley.

Arrangements were made by the Biondi Funeral Home. Interment was in Glendale Cemetery, Bloomfield.

A. Giammarino; New York mason

A Mass was offered at St. Mary's Church March 9 for Angelo Giammarino, 71, who died here March 5 at Clara Maass Memorial Hospital.

Born in Newark, Mr. Giammarino lived in Nutley 18 years. He was a retired mason for Rissel Construction Company, New York. He was a member of the Cement Masons Local 780, New York City.

Surviving are his wife, Pasqualina; a daughter, Mrs. Roseann Lupo of Nutley; a son, Dr. Anthony M. Giammarino of Port Jefferson, N.Y.; his mother, Mrs. Mariantonina Giammarino of New York; two brothers, Frank and Joseph, both of Belleville; two sisters, Mrs. Concetta DiStasio of Brooklyn, N.Y., and Mrs. Mary Rendo of Brooklyn, N.Y., and five grandchildren.

Arrangements were handled by the Biondi Funeral Home. Interment was in Cresthaven Memorial Park, Clifton.

Termite armies marching now, warn exterminators

It is not suggested that you spruce up your homes and prepare your best rooms. These visitors are unwelcome ones. They're termites, millions of them, who, about this time of year, are swarming in this and other communities bent on feasting on house and home.

No need for alarm, according to Ken Nichols, division manager of Rissel Exterminator Company, one of the nation's largest organizations of its kind. He says that modern-day deterrents effectively stop these marauders dead in their tracks.

Josephine Spencer, 82; Anna Pennetti lived here for 60 years

A Mass was offered March 17 at Holy Cross Church, Harrison, for Josephine Spencer, 82, who died March 13 at Hackettstown Memorial Hospital.

Born in Newark, Mrs. Spencer lived in Belleville 60 years. She was employed by the A & P, Belleville 25 years.

Mrs. Spencer was a member of the Holy Cross Senior Citizens Club of Harrison.

Surviving are her son, James Travers of Harrison; five grandchildren and four great-grandchildren.

Arrangements were made by the Mulligan Funeral Home, Harrison. Interment was in Glendale Cemetery, Bloomfield.

Born in Newark, Mrs. Manzione lived in Nutley 35 years.

Surviving are her husband, Anthony Sr.; two daughters, Mrs. Rose Marrazza of Rutherford and Mrs. Jo Ann Bonanno of Nutley; a son, Anthony of East Hanover; a brother, Walter Sobka of Newark; six sisters, Mrs. Theresa Banack of Newark, Mrs. Estelle Jacobs of Belleville, Miss Wanda and Miss Dora Billington, both of Clifton, and Mrs. Eleanor Warhol and Mrs. Lucille Udvarhelyi of Nutley, and seven grandchildren.

Arrangements were made by the Biondi Funeral Home. Interment was in Hollywood Memorial Park, Union.

Beatrice Leber

A service was offered March 19 for Beatrice Leber, 93, who died March 16 at home.

Born in Czechoslovakia, Mrs. Leber lived in Newark before coming to Belleville 14 years ago.

Surviving are her daughter, Mrs. Tillie Janowitz of Belleville, and a son, Frank R. Smith, both of Belleville.

Arrangements were made by the Irvine-Cozzarelli Memorial Home. Interment was in Cedar Lawn Cemetery, Paterson.

Dorothy Penn

A service was offered Friday for Dorothy Penn, 82, who died March 14 at Mountside Hospital, Glen Ridge.

Born in Newark, Mrs. Penn lived in Belleville 33 years. She retired in 1959 after working 26 years for the former Schrafft's Restaurant in Newark.

Surviving are her daughter, Mrs. Dorothy Szilagyi of Belleville and a sister, Mrs. Anna Probst of Nutley.

Arrangements were made by the Kiernan Funeral Home. Interment was in Restland Memorial Park, East Hanover.

Irvine Cozzarelli

MEMORIAL HOME

James J. Cozzarelli, Jr.
Owner-Manager

Serving Every Religion

276 Washington Ave.
Belleville, N.J.
759-1114

GEORGE F. KIERNAN
PATRICK J. KIERNAN

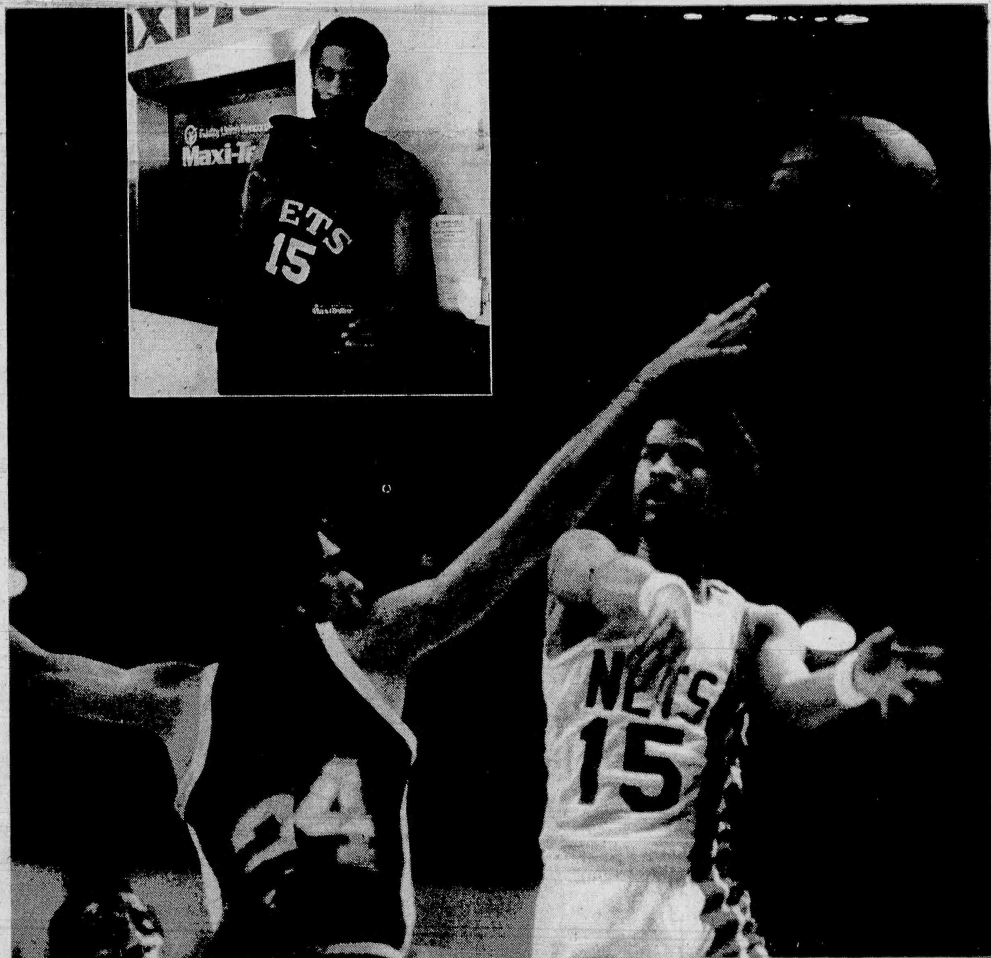
KIERNAN FUNERAL HOME

(Non-Sectarian)

101 UNION AVENUE
BELLEVILLE, N.J.

759-3503

How does Eddie Jordan get cash after playing three overtimes?



Eddie Jordan, New Jersey Nets Guard—Led Rutgers to a 31-2 season in 1976

With a Maxi-Teller® Credit Line. N.J.'s 24-hour automatic loan.

It's one of many banking services you have access to inside our 24-hour Maxi-Teller Banking Centers. With Maxi-Teller Banking, your own personal code opens the bank. It's your password and it puts you in control of your money 24-hours a day.

Do all your banking in any weather inside our Maxi-Teller Banking Centers. Get cash or make deposits to checking or statement savings, transfer money, between accounts, make loan payments, even check your balance in just seconds. Maxi-Teller Banking is going to make a night and day difference in the way you live and bank. Get all the details today at our office nearest you.



FIDELITY
UNION TRUST COMPANY
A Fidelity Union Bancorporation Bank • Member FDIC

Maxi-Teller Banking is also available at Colonial First National Bank and The National Bank of New Jersey.
Belleville Office: Washington & Belleville Avenues
Belleville, New Jersey 07103 (201) 436-4300

Marlboro Lights

The spirit of Marlboro
in a low tar cigarette.



Warning: The Surgeon General Has Determined
That Cigarette Smoking Is Dangerous to Your Health.

Kings: 12 mg "tar," 0.8 mg nicotine av. per cigarette, FTC Report May '78. 100's: 12 mg "tar," 0.8 mg nicotine av. per cigarette by FTC Method.

times/news sports

Mike Lamberti's

Buc Shots



A vote for athlete of the year at BHS

You can call him whatever you want, a great athlete, a tremendous competitor, a true sportsman, or — as he was described here last week — superman.

Chris Musmanno, in my opinion Belleville High's athlete of the year, did one hell of a job this past season on the wrestling mat. He went through the regular season unbeaten and in many instances untouched. He won the highly competitive Caldwell Christmas Tourney. He was named the most valuable wrestler in the Essex County Tournament. Chris was the district and regional champ and in all that time really had only one difficult match.

As a sophomore last year, he was the only man to advance to the state tourney. He was beaten in the first round. As a junior this year, he was the only Buc to advance to the state tourney. He was not beaten in the first round. Nor the second. Nor the third. It took a man named Bill Dykeman, from Highland, who probably stuffed his uniform with cryptonite to beat superman. Dykeman beat him in the championship round of the state tournament. The final score was 8-2, the only blemish on an otherwise outstanding year for the Bellevillite. Chris finished the season at 24-1.

The sad part, I mean for the other 158-pounders in the state, is that Chris will be back next year. He'll have another year of experience. He'll have another year at the weights. Supermen could very well be superman by the time next season rolls around.

If you ever are walking or driving through the streets of Belleville, chances are you'll see Chris running. He is a 12-month, 365-day-a-year athlete. He is dedicated to the sport of wrestling. He primes himself all year for those four winter months when the crowd is yelling and he is doing his thing, showing the opponent the make of the lights on the Belleville High gym ceiling.

Don't be surprised if Chris ends up in the 1984 Olympics. Chris has made the entire town of Belleville proud and with continued success could make the entire country proud when he brings home a gold medal in 1984.

The more I watch them, the more I can't stand viewing NBA basketball games. The players have become rich men and thus really don't care about the game anymore. I was talking the other day with Jon Semcer, the assistant track coach at Belleville High and assistant basketball coach at Valley High. Jon pointed out that the NBA players come downcourt and shoot. That's it. They don't set up any plays, play little if any defense and don't seem to show any enthusiasm for playing the game.

Attendance has dropped considerably the past two years and will drop more if things don't change. David Thompson is a great player. But is David Thompson worth \$800,000 a year? When you come right down to it, a man who is paid that much money for playing basketball should be able to carry the entire team on his back. Basketball, like the other professional sports, is ruining itself. There is no way that a professional athlete should be paid more than a doctor, a person who has to endure 12 years of school or a garbage collector — someone who really does society a service. What makes it even funnier and even more pathetic is that the average NBA player is earning more a year than the president of the United States. But then again...

Last Sunday, I watched a portion of a game between the Milwaukee Bucks and San Antonio Spurs. The Bucks were winning the game on their home court, but you'd never know it. The fans were more interested in who was selling the hotdogs, and, it being Milwaukee, who was peddling the beer. The players were jogging down the court, talking to each other. A man would pull down a rebound pass, throw it to a teammate and that man would race downcourt and take a shot. Occasionally there would be a slam dunk that would excite the crowd on a bit.

What would be wrong with cutting these players' salaries down a bit? Ten years ago, the entire Boston Celtics squad earned as much as David Thompson does now. There is no way that today's players are better than John Havlicek, Bill Russell or Wilt Chamberlain were 10 years ago. If the players won't take a cut in pay, then get rid of them. There is plenty of fresh talent that would jump at the opportunity to play in the NBA. Greed has ruined today's modern professional athlete, witness Larry Conka, Marvin Webster and Tom Seaver.

Meanwhile, the greatest event of the sports year, the NCAA Basketball Tournament has produced nothing but excitement and surprises. Whoever expected UCLA to lose to De Paul? I don't think that too many people expected Notre Dame to fall to Michigan State. In any case, the four teams left in the tourney are Penn, Michigan State, Indiana State and De Paul. When the smoke clears in the semifinals this Saturday watch for Indiana State and Michigan State to play for the title Monday.

Indiana State, led by its all-world center, Larry Bird, is super. The Sycamores beat a good Arkansas team last Saturday and face De Paul this week. Bird was being triple-teamed for most of the contest and still scored 31 points, pulled down 13 rebounds and handed out seven assists. Michigan State, led by sophomore Earvin "Magic" Johnson, completely overwhelmed Notre Dame, which was good to see since the Irish were fawned over to an even more revolting than usual extent this season. Johnson was everywhere. He shot well, passed with unbelievable magnificence and showed himself to be a great ballhandler. But don't discount Penn and De Paul. They beat two very good teams to make it to the final four and will be tough to beat on Saturday.

Rutgers was beaten in the semifinal round of the eastern regional by St. John's. The loss marked the last game in the collegiate career of Bellevillite Abdel Anderson. Whether or not he will be drafted by the pros next year remains to be seen, but he is quite an athlete and quite a competitor just the same.

Mat title barely eludes Belleville's Musmanno



Rounding 'Em — Lenny Mendola puts foot to sack in baseball workouts last week. Covering the bag is Domenick Vazzano. The Bucs have scrimmaged several times this past week in preparation for the season opener April 3.

By Mike Lamberti

Making Belleville history, junior matman Chris Musmanno took second place in the state wrestling championships at Jadwin Gymnasium in front of 15,000 fans.

Musmanno stopped Tony Williams of Millville 8-2 in the quarterfinals and Mike Oldridge of Watchung Hills in the semifinals 3-2 before losing his first match of the entire season 5-2 to Bill Dykeman of Highland.

Musmanno's record for 1978-79 was 24-1, and he became the first Belleville man ever to place second in the state tourney. The best a Bellevillite had ever done before Musmanno was a third place.

Head-mat coach Gene D'Alessandro was very happy with Musmanno's performance despite the disappointing loss. "I'm very happy that he made it this far," explained the coach. "He's a great athlete and did a great job against some very strong competition."

In the quarterfinals, Musmanno defeated Williams who had a record of 18-1. The first period was scoreless, but Williams jumped out in front 2-0 with a reversal. That was all that the man from Millville would do for the rest of the match, however. In the next 15 seconds, Musmanno put Williams on his back for a 4-2 lead. In the third frame, Musmanno

used a heel pick on an escape for a 7-2 lead. He gained an additional point on riding time and won 8-2.

Mike Oldridge of Watchung Hills was a stiff competitor in the semis. Oldridge had a 23-1 record and gave Musmanno all he could handle. It was Oldridge's third year in the states. The first period was scoreless, but Musmanno used an escape to his advantage in the second round for a 1-0 lead. In the third frame, he reversed his opponent for a 3-0 lead. Oldridge came back for a reversal himself to cut the gap to 3-1. He scored one more point on riding time to close it to 3-2, but it wasn't enough.

In the finals, Musmanno was beaten by Bill Dykeman of Highland. Dykeman, also a junior, scored a two-point takedown 10 seconds into the match. Musmanno came back with an escape and trailed 2-1 at the end of the period.

Dykeman scored an escape in the second frame to boost his lead to 3-1. In the final period, Musmanno engineered another escape to narrow the score to 3-2. With 40 seconds left, Musmanno shot for his opponent's legs, but the maneuver failed. Dykeman scored a takedown and won the match 5-2.

It was a great year for Musmanno and he can take comfort from that and the fact that he still has another year to go. (See today's Buc Shots.)

Girls' and boys' track teams look good, but depth causing concern

With a new air of enthusiasm, the Belleville track team has hit the cinders for the 1979 season with a flourish.

Under the guidance of fifth year coach Rich Ruffalo, the boys' team has shown great promise in the early going. Ruffalo is assisted by John Semcer and Larry Jinx. Jinx is in his first year with the Bucs after an extensive stay with the Maroon Raiders of Nutley. The girls' team, coached by Debbie Meola, has some athletes who look to be great competitors.

In addition to the promise the team shows, the Board of Education has chipped in by providing the team with much needed pits and pole vault equipment. "We're very appreciative to the Board of Education for all the help they gave us," said Ruffalo. "We hope that we can show our appreciation by being a winner."

Last year's record was 6-12, but that can be a bit deceiving. The year before, the team was only 2-14 and was really not much of a competitor in many of those meets. Last year the Bucs lost two meets by a total of two points and were always fighting to the end.

The Bucs' major strength this season should lie in the weight events. Those consist of the javelin, shot put and discus throws. The team has the height and weight to beat just about anybody. The javelin throwers are tentatively Russ Pagano (6-3, 230), Pat Cicalese (5-11, 220), Pete Martin (6-5, 200), Bill Walsh (6-2, 185), Pompeo Pasquale (6-0, 210) and Rich Gasheke (6-0, 195). Tossing the shot and disc will be team captain Joe D'Agostino (5-10, 200), Anthony D'Agostino (6-2, 220) and Joe DeLorenzo (6-1, 225). "I feel that all the javelin throwers should be over 160 feet with relative ease," said Ruffalo. "The entire weight team is very strong, and they have a great deal of desire in them."

The high jumping chores will be shared by seniors Scott Jackson and Martin. Both men were members of this year's basketball team, and both have the potential to clear the six-foot mark. Three veterans return to the pole vault pits. Seniors Michael Dunleavy, and juniors Ralph DePas-

quale and Brain McManus all should clear the 10-foot mark.

The runners, under the guidance of Jinx, have potential but lack a very important element, depth. The sprinting chores will be done by Kenny Duva, Xavier Gonzalez and Angelo Centanni. In the hurdling department, George Dulski and Steve Drake, both sophomores, will handle the high and low hurdles. In the quarter mile, John Vaccaro, a man with potential to earn all-state status, should be a big factor. Vaccaro has been running on the varsity level since his freshman year, and the junior is hoping to smash the 50-second mark by the time the Essex County Tournament comes around.

The half-mile department is a bit questionable. If senior all-county man Mike Graham can make a complete return from a nagging injury, then things look very bright. Graham suffered a stress fracture of his foot during the cross country season and is still trying to come back. He has been working out and is starting to return to form. The mile and two-mile events will be handled by Tom Graham, Dean Santulli, Pat Leonidis, Steve Gatti and Paul Long. Leonidis is the only senior among those distance runners.

According to Jinx, "We have some fine front-line runners, but if we get hit by any injuries, we'll be in trouble. We are lacking depth, and it could prove to be costly."

Over at the girls' camp, Debbie Meola is anxiously awaiting the commencement of the season. Last year, the team's second in existence, the record was 5-10-1. There are plenty of girls who have talent and with proper training will be very successful.

Peggy Gilday is back for her third season. She holds the girls' record for the quarter mile with a 64-second performance. She will be running in the half and mile events this year. Sophomore Dana Caruso, a girl who made her presence known during the cross country season by advancing to the state championships, will also compete in the half and mile events. Two other girls are training for distance events. They are Tamanna Nahar and Jessica Valiente.

Seven girls are out for the sprints. The veteran of the group is senior Anne Marie Frederick. She has good speed and will also be used in the mile relay. Joanne Frederick, Maureen Brady, Cecilia Graham, Rhonda Edwards, Lisa Wells and Franchette Polite are also sprinting hopefuls.

Like the boys, the girls strong spot lies in the weight events. Senior Karen Portuese, who holds the Bucanette javelin record of 108 feet, is out to try to break that mark. Sandy Nardone is also a promising javelin thrower. In the shot and disc events, Melinda Amrosi, only a junior, hopes to break the records she has already set. She is a very strong

athlete and displays excellent form. Mary Lou Clark and Maria DiPaolo are also working to earn a spot on the weight team.

The hurdling chores are being done by Runda Esquello, Domenique Lewis, Chickie Liberti and Geri Angeline. Angeline will also see action as a high jumper.

"We have some girls back from last year's team who have improved greatly," said Meola. "Our weight team is very good, and our sprinting looks tough. About the only thing I'm worried about is our distance team. We seem to lack a bit of depth in that department." — Mike Lamberti

Zanfini wants zeal from diamondmen

"It's going to require a lot of hard work and intensity."

Those are the words of head BHS baseball Coach George Zanfini about his 1979 team. "We've been working hard," adds the coach, "but the intensity hasn't come yet."

The team started practice March 1 and has played two scrimmages since. Last week the Bucs squared off with Verona and on Monday battled Clifton.

The Verona game was one in which the coach used all 30 participants. In last Monday's battle with Clifton, Zanfini used just 19 players and is beginning to get a general idea of whom he plans to start when the season begins April 3 with a home contest against Montclair. It's still too early for him to name names though.

"We've been making a lot of mental errors," said Zanfini. "I'm not as pleased as I'd like to be. We have a lot of letterman returning from last year's team, but the kids haven't been really sharp yet."

Last year's team was the Big 10 champ as it compiled an 18-4 record. Zanfini warns though that that statistic could prove to be disastrous. "You can't win anything on paper,"

he says. "Other teams are not going to lie down just because we were 18-4 last year. We have a tough schedule and added North Bergen to the slate."

The weather has been pretty kind to the team unlike last year. The Bucs of 1978 never hit the field until March 23. This year they have gotten plenty of work on the field.

"We have excellent talent and great potential," summarized the coach. "Our pitchers have to be solid and our fundamentals must be perfect. It requires a lot of hard work, but the kids can definitely do it." — Mike Lamberti

Mat dinner next week

The Belleville Wrestling Parents and Friends Association will honor the 1978-79 freshman, junior varsity and varsity wrestling teams and coaches for each of the squads at its fourth annual dinner Friday, March 30.

The affair will be held at the Chandelier Restaurant, 338 Franklin Ave., and is set to begin 7 p.m.

Then Play On champ of men's hoop league

In what was truly a fitting climax to an exciting season, Then Play On scored an upset victory in overtime to take the Recreation Men's Basketball League championship from Nanny's Cafe 90-85.

Then Play On was ahead at half-time 42-35, but Nanny's fought back to lead in the third quarter 63-57. In the closing minutes of the fourth quarter, Tom Shoebridge sank a jump shot to put Then Play On ahead 76-74. Frank Russomanno answered for Nanny's to tie the score.

Following a missed foul shot, John Machiaverna put Nanny's in the lead with a driving layup 78-76, but with two seconds remaining on the clock, Bob Tuscano was fouled and sank both shots to knot the score 78-78. Nanny's inbounded the ball, and John Machiaverna fired a 60-foot desperation shot which hit the rim, leaving the game tied through four quarters. Then Play prevailed in the three-minute overtime.

Then Play On had finished the regular season in fourth place and earned its way into the championship game by defeating fifth-place Half Penny Pub and first-place Chief Motors.

Then Play On made up for its lack of height with excellent fundamental basketball. The team passed well, boxed out and rarely threw the ball away. The team's floor leader was Jim Corino, the Lyndhurst High School basketball coach, who was born and raised in Belleville. Corino scored 37 points to lead Then Play On over Nanny's.

Also scoring for the champions were Bob Tuscano with 21 points, Terry Shoebridge 17, Tony Sorrentino six, Tom Shoebridge five and Carl Corino four. Other members of the team were Carmen Guinta, Rich Della Terza and Randy Smith.

The scoring for Nanny's was done by John Machiaverna 18, Gary Soldo and Jack Rush 12 each, Tony Cotugno eight, Frank Russomanno four and Rich Lehman two. Other team members were Art Pellechio, DeMasi and Tom Nisoviccia.

The Recreation Department has extended its congratulations to Then Play On, all the Men's League participants and sponsors for a highly competitive, smooth-running season.

Honda Is Tops
The Belleville Recreation Senior Boy's Basketball League ended in climactic fashion as Belleville-Newark Honda topped Mickey Music in a well played, see-saw championship battle. At the start, it appeared as if the third-seeded Mickey Music squad was going to shock the favorite Honda team. The lead was exchanged throughout the contest, but Honda fought off a late Mickey surge and secured a hard-earned 57-51 victory.

The underdog team's shooting in the first quarter, led by Barry Taylor's quick eight points, Mickey Music led at the end of the first period 18-13. But Honda, in the style that had brought its first-place, regular-season finish, came back fighting and led at the half 33-26. Mickey Music played a close game to the end, failing to get nearer than the three-point, 41-38 difference at three quarters.

Jim Kelley and Jim Galasso led Honda with 14 points apiece, team captain Dan Borgo scored 12, Louie DePasquale eight, Joe Ritacco seven and Lou Ritacco two. Robert Barbara and Kenny Miele were reserves on the championship team, and Pat Nufrio served as coach.

Mickey Music was led by David Cary's 12 points. Mike Isler had 11, Barry Taylor and Percy Flowers 10 each, Stanley McDaniels six and Billy Spender and Alan Talmadge one apiece. Other team members were Andre Taylor and Doug Henle, Chuckie Wells and Keith Isler coached.

League coordinators Frank Petite and Dennis Buckley commended all participants on a well played season. Referees this year were Bob Haug, Rich Baker, Tom Marano and Tom Smith. Scorers and timers were Joe Catalfamo, Phil Cerza, Dave DiGiacomo and Mark Vangieri.

Suburban Girls
The seventh and eighth grade Belleville junior girls' suburban basketball team finished the season with a 9-3 record by crushing South Orange 48-16 last Monday.

Coached by Camille Casoletto and Debbie Meola, the Belleville squad, playing its first season in the Suburban League, finished in fourth place, qualifying it for the post-season playoffs. Details on the playoffs were not yet available.

Doing the scoring for the home team against South Orange were Jennifer Apacella with 18 points, Donna Campana 10, Michele Speduto eight, Kathy Woods six, Janine

Renna four and Marlene Talmadge two. Contributing with strong defense were Lorelei Wells, Dina D'Aquino, Jackie Trindale, Critchley and Maria Trindale.

Housewives' Softball
Housewives seeking exercise, friendly competition and teamwork can grab their sneakers and children's baseball gloves and report to Belleville Park, Belleville Avenue on diamond one by the senior citizen building for games 9:30 a.m. April 3. Rain date is April 4.

The Recreation Department is still seeking adults interested in teaching young boys and girls the fundamentals of baseball and softball.

Broncos sponsor cheering clinics

The Belleville Bronco organization is sponsoring a cheering clinic for girls planning to try out for the junior varsity and varsity cheering squads in late April.

Clinics will be held at the Friendly House, Frederick Street, off Newark Avenue behind Clara Maass Memorial Hospital, 7-9 p.m. Wednesdays, March 28, April 4 and 11. Girls will be taught all cheers required for tryouts.

Any Belleville girl presently in the fifth grade is eligible for the junior varsity squad. Any Belleville girl now in the sixth or seventh grade is eligible for the varsity squad. All girls are encouraged to attend if they want to try out for either squad. For more information, call Annette Luzzi at 759-4009.

Belleville Knights will hold annual sports night April 2

Joe Jarman, chairman of the Belleville Knights of Columbus Youth Committee, has announced that the organization will hold its annual sports night Monday, April 2. The event will be open to members, their wives, children and guests ages 8 to 14 and will follow a membership meeting starting 8 p.m.

Prizes for winners of the group's basketball free throw contest, essay contest and recent spelling bee will be awarded. There will also be a guest speaker and a sports film. Refreshments and additional prizes will be distributed to children.

Deputy Grand Knight Frank

Corbo, who is also chairman of the Belleville council's annual drive for retarded children, has announced that the drive will begin Friday morning, April 6, and continue until April 8.

SUIT CLUB WINNERS
MON: R. VAN DER WENDE
NUTLEY
FRI: NEW CLUB FORMING
NUTLEY
FRANKLIN MEN'S
SHOP
667-0189

GOOD SUN., MARCH 18 THRU SAT., MARCH 24, 1979.

Two Guys[®] SUPER SUPERMARKET[®]

SHENANDOAH - BASTED
"GRADE-A" TURKEYS

10-14 lb.
AVG.

75¢
lb.

FULLY COOKED - SHANK PORTION
SMOKED HAM

BUTT
PORTION
1.09 lb.

99¢
lb.

PERDUE - THIGH ON
ROASTER LEG
77¢
lb.

THIGHS lb. 89¢
DRUMSTICKS lb. 99¢

SHENANDOAH
FRESH TURKEY PARTS!
• DRUMSTICK • WING PORTION • WINGETTES
MIX OR MATCH!
59¢
lb.

DELICIOUS AS KIDNEY PIE!
FRESH BEEF KIDNEYS
39¢
lb.

FIRST CUT - USUAL FINE TRIM
Chuck Steak 1.39 lb.

SEMI-BONELESS BOTTOM CHUCK
Pot Roast 1.89 lb.

CUT FROM SHOULDER
London Broil 1.99 lb.

DAIRY DEPT.
TROPICANA
ORANGE JUICE
SAVE 30¢
1/2-GAL. CTN. **1.09**

KRAFT
AMERICAN SINGLES
SAVE 30¢
12-OZ. **1.19**

APPETIZING!
STORE COOKED - VIRGINIA HAM
69¢
lb.

LAND-O-LAKE - AMERICAN CHEESE
WHITE OR YELLOW
98¢
lb.

FROZEN FOODS
CHICKEN-BEEF-TURKEY BANQUET MEAT PIES
SAVE 48¢
8-OZ. **4 \$1**

BAKERY BUYS!
TWO GUYS-RND. OR SOU. WHITE BREAD
NO PRESERVATIVES
3 \$1
22-OZ.

SARA LEE
POUND CAKE
SAVE 30¢
10-LB. OZ. **99¢**

SAVARIN COFFEE
1.89
1-LB. CAN

DUNCAN HINES
CAKE MIX
ALL VARIETIES
65¢
16-OZ. BOX

WALDORF
BATHROOM TISSUE
79¢
4-PK.

MOTT'S
APPLE SAUCE
3 \$1
15-OZ. JARS

REYNOLD'S WRAP
ALUMINUM FOIL
3 \$1
25-FT. ROLLS

KEEBLER
ZESTA SALTINES
59¢
16-OZ. BOX

CAROLINA
RICE
2.99
10-LB. BAG

CRISCO
OIL
4.69
GAL.

PALMOLIVE
DISH DETERGENT
99¢
32-OZ. BTL.

MUELLER
ELBOW MACARONI
39¢
1-LB. BOX

FOR YOUR LAUNDRY
Ajax Detergent 3.99
7-1/2-OZ. BOX

GOLDEN GRAIN 7-1/2-OZ. BOX
Macaroni 2.49¢
AND CHEDDAR FOR

ALL VARIETIES
Cup O' Noodles 49¢
7-1/2-OZ. CUP

Two Guys[®]
FOOD DEPARTMENT

KEARNY
175 PASSAIC AVENUE

Open Daily 8:00 A.M. to 9:30 P.M. — Sunday 8:00 A.M. to 5:00 P.M.

FLYING HIGH!

This week, your children will be flying high with Grover and the letters G, H and I in Volume 4 of



THE SESAME STREET LIBRARY

Volume 1 only
99¢
VOLUMES 2-14
\$1.99
each

Two Guys clip & save

WITH THIS COUPON AND A \$7.50 OR MORE FOOD PURCHASE YOU PAY **29¢**

ONE HEAD - CALIFORNIA
ICEBERG LETTUCE
ONE HEAD PER COUPON
One coupon per customer. Good Sun., Mar. 18 thru Sat., Mar. 24, 1979.

Two Guys clip & save

WITH THIS COUPON AND A \$7.50 OR MORE FOOD PURCHASE YOU PAY **49¢**

6-1/2-OZ. CAN - BUMBLE BEE
CHUNK LIGHT TUNA
ONE CAN PER COUPON
One coupon per customer. Good Sun., Mar. 18 thru Sat., Mar. 24, 1979.

Two Guys clip & save

WITH THIS COUPON AND A \$7.50 OR MORE FOOD PURCHASE YOU PAY **49¢**

HALF GALLON - REG. OR DIET
C & C COLA
ONE HALF GALLON PER COUPON
One coupon per customer. Good Sun., Mar. 18 thru Sat., Mar. 24, 1979.

FRESH PRODUCE!

GOLDEN RIPE BANANAS
5 \$1
LBS.

SIZE NO. 48 - FLORIDA WHITE SEEDLESS GRAPEFRUIT
6 \$1
FOR

BUY NOW!
Southern Yams 4 \$1
SAVE MORE!
Pascal Celery 49¢
COMPARE & SAVE!
Green Peppers 59¢

We reserve the right to limit quantities.
Not responsible for typographical errors.
Price effective thru Sat., March 24, 1979.
©Two Guys Inc., 1979.

Local couples find adoption simpler in foreign countries

By Mary Dominski

Dramatic increases in abortions, widespread use of birth control and growing acceptance of the unwed mother in the 1970s have combined to diminish a couple's chance of becoming adoptive parents. However, two paths do remain open to the childless couple.

At a recent meeting of the Nutley United Way, social worker Lynn Witkin said that inter-country adoption has grown in the past several years due to the fact that the availability of the Caucasian child was "very limited."

But they applied for their son David from Nicaragua, through CPFA.

"When we decided that we wanted to adopt, we went through the phonebook, trying to get in touch with agencies. Everyone kept telling us that we would have to wait five to 10 years," Janet Walsh said. "A friend of ours told us of someone she had met who had adopted a child from South America, and that's when we started, to seriously consider the idea."

The Walshes applied for Adrienne Oct. 31 and they were

John and Janet Walsh are members of CPFA, and Janet said that it is helpful to get involved in the organization if adoption is being considered. While in Columbia, they met many couples from New Jersey, many of whom they still keep in contact with.

MICHAEL AND EILEEN Groome of Nutley said that they had no qualms about adopting a baby from South America. "She's brought us nothing but joy," Mrs. Groome said.

The Groomes applied for their baby from the same agency in Columbia that the Walshes dealt with.

"There's a lot of paperwork to be taken care of, but it is certainly worth it," Mrs. Groome said of Kathleen, who will turn 1 March 13.

Eight-year-old Michael, biological son of the Groomes, gets along well with his new sister, according to his mother.

"All his friends love her. And to her grandparents, she is a real grandchild, just as Michael is," Mrs. Groome said. "The only difference is Michael was born to us and Katie was born for us."

The Groomes are not yet members of CPFA, but they plan to get involved soon.

"This organization can help parents to get a proper perspective from other parents, and it attempts to alleviate fears that might be non-founded," Witkin said.

For information about the organization, call Joan Walsh at 887-8679. General meetings are held the first Tuesday evening of each month at the First Presbyterian Church in Whippany.

ANOTHER KIND OF child that couples may consider adopting is one who is older or handicapped. John Boyne, who works with the agency, Spaulding for Children, in Westfield says that people "cannot sit and wait for the perfect child. There are more than 100,000 of these children waiting to be adopted."

Hard-to-place children are divided into four categories: The first is the native American, who is 13 or older. Black boys 7 or older and black girls 10 or older are difficult to find parents for as are children with special needs, and brothers and sisters who want to be placed together.

Boyne, who describes adoption as "an existential relationship protected by law," says that others should be encouraged to get involved in this type of adoption.

"If you have an open mind, then consider it as a possibility," Boyne told the audience at the meeting.

Boyne also stressed that people should get involved politically. "We need people to support the adoption of a bill that would improve the medical adoption subsidy program," Boyne said.

The Spaulding Agency charges no fees for its services. "We see the placement of these children as a societal burden, so there is no charge," Boyne said.

Board schedules Pathmark meeting

The Planning Board will hold a special meeting to further discuss on the proposed Pathmark Shopping Complex next Monday night at 7:30 p.m. at Town Hall.

The special meeting will reunite Shopping Center Developers Ltd. with the board to further discuss traffic circulation and other details.

Louis Krieger, representative from Chatsworth Properties, surprised board members at the last meeting by charging that they did not have jurisdiction on the proposed Pathmark site plan.

Krieger also alerted the board that he bought the surface land above the Transcontinental Pipe Line several months ago and owns a 20-foot wide, 300-foot long section near the proposed employee parking area south of the proposed main mall.

Krieger claimed he would furnish further details to prove the contention that the proposed site could not draw from the storm sewers located on his property and also to question the board's jurisdiction at Monday night's meeting.

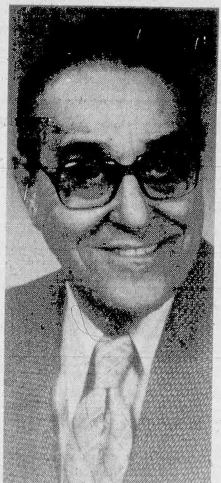
The regular Planning Board meeting will be held on Thursday, April 12 at 7:30 p.m. at Town Hall.

School 5 fashion show planned for March 30

An Easter parade dinner and fashion show is being sponsored by School 5 on Friday, March 30. The 6:30 p.m. event will feature Belleville's fashions at Gene Boyle's Restaurant, 777 Bloomfield Ave., Clifton.

Congregation to host annual dinner dance

Joseph Berkowitz, President of Congregation Ahavath Achim of Belleville, has announced that the congregation's 56th annual dinner dance will be held on Sunday, March 25, at 6:00 p.m. at the Temple.



AMUEL PANASKY

This year's dinner dance will honor Samuel Panasky for 25 years of dedicated service to the congregation and its Men's Club.

Panasky has served the congregation in many capacities since coming to Belleville in 1954, including recording secretary, financial secretary, corresponding secretary, vice-president of the Men's Club for 4 years and immediate past president of the Men's Club for 6 years. He has been a member of the congregation's board of trustees for the last 20 years, and served as bulletin chairman many times and also currently, for the past 15 years.

Active in the U.J.A. of Essex County and in the Israel Bond drives, Panasky is a member of the Jewish War Veterans.

He is married to the former Lilian Flexer of Union City, and they have a daughter Ellen Paula, who resides in Houston, Texas, and is married to William Asner.

Estelle and Bernard Zohn are co-chairmen of the dinner dance and have announced that there will be a smorgasbord and cocktail hour followed by a gourmet dinner, with dancing and entertainment. Mrs. Irving Berkowitz and Mrs. Seymour Fersko are in charge of reservations. Mrs. Joseph Berkowitz is chairman of the Ad Journal which will be distributed at the dinner dance.



Intercounty Interaction — Belleville resident Janet Walsh watches her adopted children, David, 2, and Adrienne, 2 1/2, at play. Latin countries Nicaragua and Columbia made the Walshes dreams for children a reality.

"If a couple can accept the differences in a child, it can be a very rewarding experience," Witkin said. "So far it has been successful."

WITKIN IS PRESIDENT of Concerned Persons for Adoption, (CPFA), a non-profit volunteer organization dedicated to recruiting and assisting couples who wish to adopt. Membership is open to anyone concerned with adoption.

Presently in private practice, Witkin began her involvement with adoption services in Los Angeles 10 years ago, when, she said, "the adoption process and kinds of children available was different."

"Prospective parents had to wait one or two years at the most, and they were assured of getting a child. Today, a five to 10-year wait is not uncommon," Witkin said.

Witkin said that the long wait drew many parents to consider adopting children from other countries, where the wait may be anywhere from several months to a year. Joining adoptive parents in New Jersey today are children from Bolivia, Brazil, Chile, Colombia, Costa Rica, Ecuador, India, Korea, Mexico, Nicaragua and Thailand. They can be applied for directly to an agency, or through organizations like CPFA.

Belleville residents John and Janet Walsh used both methods of applying for their two adopted children. Their 2-and-a-half-year-old daughter, Adrienne, was obtained from the agency, Casa de la Madre y el Nino, in Columbia.

called Feb. 14. Several days later they were on a plane headed for Bogota, Colombia, where they were required to spend 17 days completing paperwork dealing with medical reports, financial checks and the like.

Janet Walsh, who is adopted herself, said that the couple "had no more apprehension then if we had adopted one here."

"Her weight was low, (11 pounds at nine months) but we weren't worried about it. I knew that with proper care she would be healthy," Mrs. Walsh said.

When Adrienne came back to Belleville, she had to be treated for a parasitic condition common in Columbia but rare in the United States. Her recovery was rapid, Mrs. Walsh said, with doses of medication and the right food.

The CPFA and Lynn Witkin helped the Walshes in obtaining David from Nicaragua. He was 17 months old when he was flown up to Miami, Fla., from the Inter-American Adoption Institute in Nicaragua.

"David was very withdrawn when we got him. He was really hit with the cultural change," Mrs. Walsh said. "But within two to three weeks he was doing fine."

Mrs. Walsh said that Adrienne is very protective of her 2-year-old brother and that so far they have "responded pretty well to each other."

"He's already learned so much from her. I'm sure that if David doesn't find his own pals, Adrienne will find them for him," Mrs. Walsh remarked.

Schwartz commended by Town Commission

A resolution commending retiring School Trustee Lawrence S. Schwartz for his public service has been adopted by the Belleville Board of Commissioners.

Schwartz, who served nine years on the Belleville School Board and as president of the New Jersey School Boards' Association, was honored at a testimonial dinner Feb. 16.

The resolution adopted by the Town Commission reads, in part, "It is with deep regret that the Belleville School System will lose this exemplary board member. His deep

loyalty and integrity in the service he gave so unselfishly to the town and especially to the school children, will be sorely missed."

NOW AT
KASTNER'S



(You Must See It!)

Kastner's Furniture
402 FRANKLIN AVE. 667-1304 NUTLEY
FREE CATALOGS BY MAIL



Henry W. Block

"The simpler your return, the less we charge."

If you qualify for the Short Form, we charge a very low price. But even if you need the Long Form, the simpler the return, the less we charge. That's another reason why you should let H&R Block do your taxes.

H&R BLOCK

THE INCOME TAX PEOPLE

NUTLEY BELLEVILLE
187 Franklin Ave. 143 Washington Ave.
235-1000 751-3836
Open 9 AM-9 PM Weekdays, 9-5 Sat. & Sun. Phone 531-5585
APPOINTMENTS AVAILABLE

Drive Your Message Home!

By Advertising In Our Annual

SPRING AUTO TAB THURSDAY, MARCH 29

For Information Call

667-2700

The Nutley Sun

the Belleville times/news

\$\$\$250,000\$\$\$
CATASTROPHIC
MAJOR MEDICAL INSURANCE
CHOICE OF DEDUCTIBLES
BROUILLARD - 667-2900

Classified

New Direct Line 667-3000 OR/759-3200

CLASSIFIED ADVERTISEMENTS ARE PUBLISHED IN BOTH SUNBANK NEWSPAPERS

THE NUTLEY SUN THE BELLEVILLE TIMES

RATES EFFECTIVE APRIL 13, 1978
MINIMUM 15 WORDS FOR
INCH RATES PER COL. INCH
ONE INCH OR MORE \$4.00
TWO INCHES OR MORE \$4.50
FIVE INCHES OR MORE \$4.30
OVER TEN INCHES \$4.00

ASK ABOUT DISPLAY DISCOUNT RATE
FOR INSERTIONS RUNNING 26 WEEKS
DEADLINE FOR SPACE COPY AND
MATERIAL - 12-NOON TUESDAY

667-3000 759-3200

USE LIST BELOW FOR QUICK REFERENCE!

ANNOUNCEMENTS
AUTOMOTIVE
AUTOMOBILES
AUTO PARTS & SUPPLIES
AUTO SERVICE
AUTO WRECKERS
CAMPER & TRUCKS
MOTORCYCLES

BUSINESS SERVICES
ACCOUNTING & TAX
AIR COND. & REFRIG.
ALUM. PROD.
BATHROOMS & KITCHENS
CARPENTERS & BUILDERS
CARPETING & SERVICE
CEILING
CHIMNEY SERVICE & REP.
CLEANING & DYEING
CONSTRUCTION
DRIVEWAYS
ELECTRICIANS
EXTERMINATORS
FENCES
FLOOR SERVICE
HOME IMPROVEMENTS
INSURANCE
JUNK DEALERS
LANDSCAPING
LIMOUSINE SERVICE
MASSONRY
MISC. SERVICES
MOVING & STORAGE

PAINTING
PIANO TUNING
PLUMBING & HEAT.
PROFESSIONAL SERVICES
RECREATION
ROOFING & SIDING
TILE
TREE SERVICE
TV SERVICE
UPHOLSTERY
CHILD CARE
NURSERY SCHOOLS
FOR SALE
ANTIQUES
TELEMARKETS
GARAGE SALES
MERCHANDISE
REIS
WANTED TO BUY
HELP WANTED
SITUATIONS WANTED
INSTRUCTIONS
LOST & FOUND
MORTGAGES & LOANS
REAL ESTATE
BOARDING
BUSINESS OPPORTUNITIES
FOR RENT
FOR SALE
FURNISHED ROOMS
REAL ESTATE WANTED
SUMMER RENTALS
WANTED TO RENT

De Wise

The coupon below is for your convenience in placing a minimum
use ad to run in the Classified Section of the Nutley Sun & Belleville
Times News.

DEADLINE - Tuesday 12 Noon.

Name _____ Address _____ City _____ State _____ Zip _____
Phone _____ Amount Enclosed _____
Data Desired _____ Classification _____

Minimum Rate is up to 15 words for 34. Each additional word
20c. 50 word size words per line. Phone number counts as 1
word.

Make check or money order payable to:

Nutley Sun

777 Bloomfield Ave.,
Nutley, N.J. 07110

For Additional Information, Call 667-3000 or 759-3200

ANNOUNCEMENTS ANNOUNCEMENTS

* SOMETHING SPECIAL *

SINATRA AT RESORT

Thursday, April 12th

HONEY BEE VIA TRAILWAYS "MOONLIGHT TOUR"

Leaving Nutley, 6 P.M. - 6 A.M.

* Valet Service

* Snacks served on bus PLUS 1

* Midnight Brunch Buffet.

* Cocktail & Rendezvous Show.

* Guide Tour On Each Bus: Prizes.

* Hostess on every bus.

"You Will Be So Glad You Called HONEY BEE"

For Reservations: Call 751-4578 or 751-1882

HONEY BEE via

TRAILWAYS LUXURIOUS

BUS

Proudly Presents

RESORTS INTERNATIONAL

CASINO CARAVAN

Deluxe

Package \$15

Leave Nutley 8:30 am - Leave

Atlantic City 9pm Valet Ser-

vice - Mon. thru Fri.

* CONTINENTAL BREAKFAST

served on bus

* SUPER DELUXE BUFFET (All

You Can Eat) at the Pavilion

March 22 - 22 & 23

SPECIALIZING IN GROUPS

OF 38 OR MORE.

For reservations, please call

Honey Bee 751-4578 or 751-

1882

"You Will Be So Happy You

Called 'Prom!'"

HONEY BEE! Your Hostess

to Elvis April 20

751-6364 or 751-6340

Mon. Show - Big 11 Tribute to

Elvis April 20

MAGIC FOR KIDS

Great party entertainment by

Thomas, the Magician, - Pop

corn, kids, balloons, 751-

6537

AUTOMOTIVE

1975 GMC JIMMY

4WD, auto, V8, air,
AM/FM, P/S, P/B, new
radials, 5 mags, push
bar, outside tire rack,
high Sierra pkg. Excel-
lent Condition! 36,000
miles.

BEST OFFER!

751-6414

1979 CHEVETTE

4 door hatchback
Stick shift, bumper guard,
rear window defroster. Ex-
cellent gas mileage. Low Mileage
\$3950.
Call 482-8405 after 5pm

1971 MERCEDES BENZ

4 door
Automatic
Power Steering
Power Brakes
AM/FM Radio
65,000 miles
Cream Color
Excellent Condition
Call 667-2700
(before 5pm)
Ask for "Dean"
Or call 667-1776
after 5pm

SAVE GAS

1976 BUICK OPEL
25,000 ORIGINAL MILES
GOODRICH
STEEL BELTED RADIALS
2 BRAND NEW
RADIAL SNOWS
AM/FM RADIO
MUST SEE!
\$2600
Call
661-4912 (after 5pm)
ASK FOR TOM

BUICK

ANDY CARRINO

Sales Representative

Nutley resident.

BELVIA BUICK, INC.

Rt. 17 & Union Ave.

East Rutherford, N.J.

939-6600 3/29

1976 CADILLAC

Sedan de ville
Excellent Condition!
36,000 miles. Fully equipped.
Asking \$5700.
Call 667-3404 anytime

1976 PONTIAC SUNBIRD, 4

speed, AM/FM, air, new
radials, best offer over \$3000.
284-0197-8 after 4pm.

1969 NOVA, Silver, with

black vinyl top. Running con-
dition. \$250 is it. Call 759-
5275.

1975

CADILLAC SEDAN DE VILLE

One owner. Vinyl roof. Loaded

with extras. 41,000 miles. 6

good tires. \$3500.

Call 235-1550

Evenings 739-7619

1976 FORD GRANADA

GM/A, AM/FM radio, a/c,

leather interior. New tires.

29,000 miles. Call 667-

1515.

AUTOMOTIVE

ITS CHEAP TO

RENT-A-USED-CAR

DAILY CAR

RENTAL

FROM 77¢ PER

DAY + .07 PER

MILE

ALL CARS N.J. STATE INSPECTED

997-2710

LOCATED AT

BANNER-PULERI MOTORS

319 KEARNY AVE.

KEARNY, N.J.

1971 PLYMOUTH VALIANT

74,000 miles. Eng. good.

needs body work. \$400. or

call 667-7186 after

7pm.

1969 PONTIAC FIREBIRD

P/B, P/S, A/C.

GOOD CONDITION \$950

CALL 751-1504

1972 PLYMOUTH

FURY III

4 door, V8 eng., 31,000 miles.

Min. body damage. Snow

tires. Call 667-6166

between 6-8pm

AUTOMOTIVE

AUTO PARTS & SUPPLIES

FOR COMPLETE LINE OF

* AUTO PARTS

* TIRES

* ACCESSORIES

ITS

CAR CARE

46-48 Franklin Ave., Nutley.

667-3942

CAR CARE EXCLUSIVE

DRIVE-IN

INSTALLATION CENTER

AUTO SERVICE

Kirk's

Automatic

Transmission

"Customers are our salesmen"

One of the most reputable and

finest transmission specialists

in the area.

FREE ESTIMATES

ONE DAY SERVICE

ALL WORK

DOMESTIC AND FOREIGN

998-9666

20 RIVER ROAD

or Belleville Pike

NO. ARLINGTON, N.J.

* BODY WORK * PAINT

FRAMWORK

RIVERSIDE BOY &

FENDER WORKS

221 Valley St., Belleville

753-1162 9/9

AUTO WRECKERS

FRANKIE'S TOWING

24 Hour Service

Junks Wrecked

Cars, Trucks, etc.

"Highest Prices Paid"

Call 667-2192 3/29

BILL'S AUTO WRECKERS

S30 and UP

FOR CARS OR TRUCKS

ANY CONDITION

Belleville Pike, No. Arlington

753-1162 9/9

DO YOU HAVE A USED OR

WRECKED CAR OR TRUCK

TO SELL?

If you do, call us and we'll buy

it! On the spot cash and im-

mediate pickup available.

Bryan's Auto Wreckers

344-3113 between 9am-5pm

MOTORCYCLES

MOTORCYCLES

NEW

MOPEDS

PRE-SEASON SPECIAL

WERE \$499 - NOW

\$2990

COMPLETE

BUY NOW SAVE GAS ALL SUMMER

125 MPG

401 BLOOMFIELD AVE., BLOOMFIELD - 429 7512

WITH THIS COUPON

MOPED SERVICE

Qualified Mechanic

Specializing in

Italian Brands.

Call 661-5170 6-9pm

BUSINESS SERVICES

ACCOUNTING & TAX

TAX RETURNS PREPARED

IN YOUR HOME

Federal & State - \$15 up

Over 11 years experience.

Call 667-8780 after 6pm

B & R TAX SERVICE

4/12

SHORT - LONG OR

BUSINESS FORMS

In Your Home

Or My Office.

Ask for "DAN"

Phone 471-5567 eve

4/12

BUSINESS SERVICES

BATHROOMS & KITCHENS

RESURFACE YOUR

PRESENT CABINETS

IN FORMICA

ALSO NEW

FORMICA CABINETS

279-6655

and 843-2605 9/8

CARPENTERS & BUILDERS

CARPENTRY WORK

NO JOB TOO SMALL

Immediate delivery on kitchen

cabinets. Additions,

bathrooms, suspended ceil-

ings, alum. siding, roofing,

brick steps, awnings. Licensed

contractor. Fully insured.

License #40760

FRED CARUSO

CALL 751-7490 8/22

CARPENTERS & BUILDERS

25 Years Experience

GENERAL REPAIRS

NO JOB TOO SMALL

751-3115 4/28

Rehab

CARPENTRY SERVICE

ALTERATIONS - Study

Room, Family or TV Room,

Roof Raising, Renovation.

ALL WORK GUARANTEED

Free Estimates

Written Proposal

TONY MISALE

933-1970 438-1320

CARPENTER-BUILDER

BUSINESS SERVICES

MISC. SERVICES

BELLEVILLE-NUTLEY GLASS CO.
 • Auto Glass Services
 • Van Ovens • Autos
 • Homes • Store Fronts
 • Industrial Glassing
 751-0835
 751-0844

CHAIR CANING AND RUSHING CALL ANYTIME 743-0245

HANDYMAN
 "No Job Too Small"
 Carpentry, Small Repairs,
 Window Chains Replaced,
 Leaky Faucets Fixed,
 Painted, Etc.
 CALL AFTER 5 P.M.
 235-1096

WE REPAIR
 • Washers • Dryers
 • Refrigerators
 • Freezers
 • Air Conditioners
 E. CROSSLEY SERVICE
 667-9278

MR. FIX-IT
 "No Job Too Small"
 • Wallpapering
 • Interior Painting
 • Basic Plumbing
 • Odds 'n' Ends
 • Small Repairs
 • Nominal Rates
 Senior Citizen Discount
 661-0613

THOMAS McSTAY
 • FURNITURE REPAIR
 • TOUCH UP
 • SCRATCHES
 • BURNS
 Call 991-7161

APPLIANCE REPAIR
 • MAYTAG • GE
 • WHIRLPOOL • KENMORE
 Washers - Dryers
 35 Years Experience
 FRED PARSONS 667-3654

A-1
WE CLEAN UP ATTICS, GARAGES, CELLARS, ETC.
 Nothing too big or too small.
 Also specialize in small
 demolition work. Contractors
 also welcome.
 Call 743-4491

T & G WASTE REMOVAL
 ALSO FURNITURE MOVING
 • NO JOB TOO SMALL
 • REASONABLE RATES
 CALL ANYTIME
 546-4251 523-8831

SMOK REPAIRING
 • Handbag Repairing
 • Orthopedic Work
FLAZA BOOTER
 483 Franklin Ave. Nutley
 667-8964

RUBBISH REMOVAL
 • Basements • Cellars
 • Attics • Garages • Yards
 We Clean Everything
 From A to Z
B & J TRUCKING
 759-8981

HOOKER'S WELDING
 Truck racks made to order.
 Trailer hitch installed. Bay-
 let, motorcycles, lawn
 mowers, home & office chair
 frames welded.
 Call 939-0055

HANDYMAN
WHY PAY MORE
 • Gutters • Roofs
 • Windows • Painting
 • Carpentry • Leggy Fences
 Free Estimates
 "CALL JOE" 759-0724

LOCKSMITH
 Sales & Service
 Keys made auto lock & house
 locks. Glass & screens
 repaired.
 85 Franklin Ave., Nutley
 235-0838 House, 9-6pm Mon.
 thru Fri. 9-5pm Sat.

MOVING & STORAGE
 N.J. LOCAL MOVER
 MOVE ANYTHING.
 ONE PRICE OR FULL LOAD.
 FREE ESTIMATE.
 CALL 478-8685

GIBRALTAR MOVING CO.
 Reasonable Rates
 • Personally Supervised
 • Insured
 • Padded Moving
 • Shore Trips
 • Piano Specialists
 Local & Statewide
 746-5760

FUEL CO FUEL OIL
 C.O.D. C.O.D.
 MINIMUM 200 GALLONS
 24 HOUR
 BURNER SERVICE
 748-7011

DON'T BE IN THE COLD
 Don't have leaking Pipes.
 Reach out for
MORSE
PLUMBING & HEATING CO.
 "We are within your reach"
 372-3637

BUSINESS SERVICES

MOVING & STORAGE

CY-EX-MOVER
ODDS & ENDS
 JOBS
 928-6444
 991-9589

PAUL'S
MOVING & STORAGE
 Local & Long Distance. Packing
 & Light Deliveries.
 675-6440 226-0097
 Lic. 341

PAINTING


GAGNON'S
INTERIOR PAINTING
 Satisfaction Guaranteed
 FREE ESTIMATES

PAINTER/HANDYMAN
 "I'll do anything for you!"
 • Int. & Ext. Painting
 • Home Repairs
 • Odd Jobs
 MISTER J. 667-1494

PART TIME INTERIOR PAINTER
 VERY NEAT
 REASONABLE RATES. CALL
 JOE NOW. 235-0145

PETE'S PAINTING
 Interior & Exterior
 Light Carpentry Work
 Estimates. Cheerful. Given
 INSURED
 751-4881

INTERIOR SPECIALIST!
 • Painting
 • Paperhanging
 • "BRIAN FINLAY"
 CALL 661-1165

PAINTING
 Interior
 Free Estimates
ED STELEY
 759-7756

PAINTING
 INTERIOR, EXTERIOR
 Peter 667-6524
 Anthony 667-8429

FRANK RUMEO
 Painting Contractor
 Paperhanging
 Int. & Ext.
 Free Estimate
 No Job Too Small
 Fully Insured
 998-7046
 European Craftsman

VICTOR TIRODOLA
 Painting Contractor
 Interior & Exterior
 • PAINTING
 • GENERAL REPAIRS
 Closets
 Roofs, Leaders & Gutters.
 Also Some Carpentry Work.
 667-1893

D & M PAINTERS & DECORATORS
 • PROFESSIONAL PAPER
 HANGERS
 • SANITAS
 • FREE ESTIMATES
 • FULLY INSURED
 Call 778-6246

INTERIOR & EXTERIOR PAINTING
 Call for Free Estimate
 672-1112 (between 9-5pm)
 674-3953 Evening

PAINTING
CALL NOW
 FOR SPRING RATES
 997-1015
 Fully Insured
 By Professionals

PROFESSIONAL HOUSE PAINTING & PAPERHANGING
 Free Estimates
 Responsible & Reliable
 Satisfaction Guaranteed
 777-5658 473-7219

PLUMBING & HEATING
 Responsible & Reliable
 Satisfaction Guaranteed
 777-5658 473-7219

FUEL CO FUEL OIL
 C.O.D. C.O.D.
 MINIMUM 200 GALLONS
 24 HOUR
 BURNER SERVICE
 748-7011

DON'T BE IN THE COLD
 Don't have leaking Pipes.
 Reach out for
MORSE
PLUMBING & HEATING CO.
 "We are within your reach"
 372-3637

BUSINESS SERVICES

PLUMBING & HEATING

WINDHEIM
PLUMBING-HEATING
 418 Franklin Ave., Nutley
 • GAS HEAT
 • HOT WATER HEATERS
 • DISPOSALS
 • DISHWASHERS
 • MODERNIZING
 BATHROOMS - KITCHENS
 667-6886

PAINTING

GAGNON'S
INTERIOR PAINTING
 Satisfaction Guaranteed
 Call Ray 759-8795
 After 5:00 P.M.

PLUMBING & HEATING
 14 New Street
 Belleville
 759-1476

KEEP YOUR PLUMBING YOUNG
J.G. YOUNG & SONS INC.
PLUMBING & HEATING
 Since 1924
 Kitchen & Bathrooms Remodeled
 Automatic Fire Sprinkler Systems
 Gas Heat, Hot Water Heaters, Etc. Sewer Cleaning
 Resident, Commercial, Industrial
 Repairs, Alterations, New Construction

PLUMBING & HEATING
 14 New Street
 Belleville
 759-1476

G.P. RUSSELL CONSTRUCTION
 "Complete Plumbing & Heating"
 License #2821

RECREATION
 • Additions
 • Bathrooms
 • Dormers
 • Basements
 • Kitchens
 • Etc.

235-9209
 Free Estimate - Fully Insured
 ALL WORK GUARANTEED!

RECREATION
 • Additions
 • Bathrooms
 • Dormers
 • Basements
 • Kitchens
 • Etc.

SUM GLO CORP.
ITALIAN BOCCO BALLS
 BILLIARDS, RECREATIONAL
 SHUFFLEBOARDS &
 ACCESSORIES
 DOMESTIC & IMPORTED CUES
 GENUINE BELGIAN BALLS
 1111 Meckel St., Belleville
 759-4474

ROOFING & SIDING
MARCH & WILSON'S
ROOFING CO.
 Discount on All Hot Roofs.
 Fully Insured.
 482-3516 or 824-4551

HARRISON & SON
OVER 50 YEARS
 Industrial - Residential
 Commercial
HOT ASPHALT ROOFING
 "SPECIALISTS"
 Shingles - Slate
 Gutters & Leaders
 991-3319

DON LUBY
ROOFING
 Free Estimate
 Leaders & Gutters
 All Work Fully Guaranteed
 667-3768

HI-LO ROOFING CO.
 667-4490 NUTLEY
 Install hot tar roofs,
 shingles, leaders & gutters. Fully
 insured. All work
 guaranteed. Free estimates. In-
 dustrial & residential.

BUSARDO ROOFING CO.
 Roofing-Seamless Gutters
 Leaders & Chimney Work
 Fully Insured - Reasonable
 NO JOB TOO SMALL
 Call Anytime! 471-0417
 or after 5 p.m. 748-7330

CENTURY
HOME IMPROVEMENTS
 100 SPECIAL
 • Roofing • Siding
 • Gutters •
 • Alum. Windows & Doors
 EXPERT INSTALLATION
 All Work Guaranteed
 Free Estimates
 Deal Direct With Owner
 Call Ed Lawrence
 772-7942 797-0812

TV SERVICE
 Bob Drimmont
 TV, RADIO, HI-FI
 SERVICE
 Over 25 Years Experience
 667-0068

BUSINESS SERVICES

TILE

GUARINO TILE
 Bathrooms remodeled com-
 pletely. Free planning and es-
 timate. Cement jobs ob-
 specity. Also tile repairs and
 marble work.
 CALL 667-5041

J. SCORIO & SON
CERAMIC TILE
 Walls & Floors
 of every description.
 Foyers, Entrances, Den,
 Kitchens, Bathrooms
 Over 30 Years Experience
 759-5449

GENNA TILE
COMPLETE BATHROOM
MODERNIZATION
 • New Construction
 • Alterations
 • Repairs
 661-5172

UPHOLSTERY
 NEW UPHOLSTERY SHOP
 SLIPCOVERS, DRAPERIES
 EXPERTLY DONE AT VERY
 REASONABLE PRICES.
 CHEAPER THAN ANYONE ELSE
 QUALITY UPHOLSTERY
 64 WASHINGTON STREET
 BLOOMFIELD, N.J.
 743-9264

PLUMBING & HEATING
 14 New Street
 Belleville
 759-1476

KEEP YOUR PLUMBING YOUNG
J.G. YOUNG & SONS INC.
PLUMBING & HEATING
 Since 1924
 Kitchen & Bathrooms Remodeled
 Automatic Fire Sprinkler Systems
 Gas Heat, Hot Water Heaters, Etc. Sewer Cleaning
 Resident, Commercial, Industrial
 Repairs, Alterations, New Construction

PLUMBING & HEATING
 14 New Street
 Belleville
 759-1476

G.P. RUSSELL CONSTRUCTION
 "Complete Plumbing & Heating"
 License #2821

RECREATION
 • Additions
 • Bathrooms
 • Dormers
 • Basements
 • Kitchens
 • Etc.

235-9209
 Free Estimate - Fully Insured
 ALL WORK GUARANTEED!

RECREATION
 • Additions
 • Bathrooms
 • Dormers
 • Basements
 • Kitchens
 • Etc.

CASH FOR OLD THINGS
JEWELRY, CLOCKS, RUGS,
FURN, SILVER, CHINA, ETC.
LADY BUYS ENTIRE CON-
TENTS OF HOUSE
CALL BEA
 487-5253 224-9115

NEW VILLAGE REAL MARKET
 69 GLENWOOD PLACE
 EAST ORANGE, N.J.
 DOLL HOUSES & DOLL
 REPAIR, BUYING & SELLING
 GOLD & SILVER, SELLING
 BEAUTIFUL FURNITURE
 NEW & USED.
 DAILY, TUES. 10-5 PM, WED. 10-4 PM,
 CLOSED SUNDAY & MONDAY
 FREE PARKING

HOUSE SALE
 Sat. & Sun. 10-5pm
 March 24 & 25th
 106 Adelaide St., Belleville
 Record & radio combo
 cabinet, secretary, asto-
 bureau, round coffee table,
 sec. sofa, 1st table & chair,
 Hoover vacuum & much more.

BASEMENT SALE
 Thurs. & Fri. March 22 & 23
 9 a.m. - 5 p.m.
 242 Belleville Ave., Belleville
 Avon collection, bedspread, mini
 cond., golf & fishing equip.,
 baby carriage, lamps, books,
 household, camera equip. &
 misc.

HOUSE SALE
 Sat. & Sun. 10-5pm
 March 24 & 25th
 106 Adelaide St., Belleville
 Record & radio combo
 cabinet, secretary, asto-
 bureau, round coffee table,
 sec. sofa, 1st table & chair,
 Hoover vacuum & much more.

BASEMENT SALE
 Thurs. & Fri. March 22 & 23
 9 a.m. - 5 p.m.
 242 Belleville Ave., Belleville
 Avon collection, bedspread, mini
 cond., golf & fishing equip.,
 baby carriage, lamps, books,
 household, camera equip. &
 misc.

HOUSE SALE
 Sat. & Sun. 10-5pm
 March 24 & 25th
 106 Adelaide St., Belleville
 Record & radio combo
 cabinet, secretary, asto-
 bureau, round coffee table,
 sec. sofa, 1st table & chair,
 Hoover vacuum & much more.

BASEMENT SALE
 Thurs. & Fri. March 22 & 23
 9 a.m. - 5 p.m.
 242 Belleville Ave., Belleville
 Avon collection, bedspread, mini
 cond., golf & fishing equip.,
 baby carriage, lamps, books,
 household, camera equip. &
 misc.

HOUSE SALE
 Sat. & Sun. 10-5pm
 March 24 & 25th
 106 Adelaide St., Belleville
 Record & radio combo
 cabinet, secretary, asto-
 bureau, round coffee table,
 sec. sofa, 1st table & chair,
 Hoover vacuum & much more.

BASEMENT SALE
 Thurs. & Fri. March 22 & 23
 9 a.m. - 5 p.m.
 242 Belleville Ave., Belleville
 Avon collection, bedspread, mini
 cond., golf & fishing equip.,
 baby carriage, lamps, books,
 household, camera equip. &
 misc.

HOUSE SALE
 Sat. & Sun. 10-5pm
 March 24 & 25th
 106 Adelaide St., Belleville
 Record & radio combo
 cabinet, secretary, asto-
 bureau, round coffee table,
 sec. sofa, 1st table & chair,
 Hoover vacuum & much more.

CHILD CARE

NURSERY SCHOOLS

Sandy Lane
Nursery School
 PRE-SCHOOL
 DAY CARE
 KINDERGARTEN
 AGES 2-6
 "A CHILD'S WORLD
 WHERE PLAYING IS LEARNING"
 634 Mill Street
 Belleville
 751-6380
 Days & hours to meet your needs.
 Hours: 7:45-5:45
 Call or come in to register
 School open to visitors
 Developmental Programs in:
 • Art • Music • Skills
 • Language • Social Development
 Continuous day care program for working mothers
 Nutritionally Balanced Lunch
 State Licensed certified school & teachers
 DEDICATED TO A PROGRAM OF EARLY CHILDHOOD EDUCATION

Call or come in to register
 School open to visitors
 Developmental Programs in:
 • Art • Music • Skills
 • Language • Social Development
 Continuous day care program for working mothers
 Nutritionally Balanced Lunch
 State Licensed certified school & teachers
 DEDICATED TO A PROGRAM OF EARLY CHILDHOOD EDUCATION

Call or come in to register
 School open to visitors
 Developmental Programs in:
 • Art • Music • Skills
 • Language • Social Development
 Continuous day care program for working mothers
 Nutritionally Balanced Lunch
 State Licensed certified school & teachers
 DEDICATED TO A PROGRAM OF EARLY CHILDHOOD EDUCATION

Call or come in to register
 School open to visitors
 Developmental Programs in:
 • Art • Music • Skills
 • Language • Social Development
 Continuous day care program for working mothers
 Nutritionally Balanced Lunch
 State Licensed certified school & teachers
 DEDICATED TO A PROGRAM OF EARLY CHILDHOOD EDUCATION

Call or come in to register
 School open to visitors
 Developmental Programs in:
 • Art • Music • Skills
 • Language • Social Development
 Continuous day care program for working mothers
 Nutritionally Balanced Lunch
 State Licensed certified school & teachers
 DEDICATED TO A PROGRAM OF EARLY CHILDHOOD EDUCATION

Call or come in to register
 School open to visitors
 Developmental Programs in:
 • Art • Music • Skills
 • Language • Social Development
 Continuous day care program for working mothers
 Nutritionally Balanced Lunch
 State Licensed certified school & teachers
 DEDICATED TO A PROGRAM OF EARLY CHILDHOOD EDUCATION

Call or come in to register
 School open to visitors
 Developmental Programs in:
 • Art • Music • Skills
 • Language • Social Development
 Continuous day care program for working mothers
 Nutritionally Balanced Lunch
 State Licensed certified school & teachers
 DEDICATED TO A PROGRAM OF EARLY CHILDHOOD EDUCATION

Call or come in to register
 School open to visitors
 Developmental Programs in:
 • Art • Music • Skills
 • Language • Social Development
 Continuous day care program for working mothers
 Nutritionally Balanced Lunch
 State Licensed certified school & teachers
 DEDICATED TO A PROGRAM OF EARLY CHILDHOOD EDUCATION

Call or come in to register
 School open to visitors
 Developmental Programs in:
 • Art • Music • Skills
 • Language • Social Development
 Continuous day care program for working mothers
 Nutritionally Balanced Lunch
 State Licensed certified school & teachers
 DEDICATED TO A PROGRAM OF EARLY CHILDHOOD EDUCATION

Call or come in to register
 School open to visitors
 Developmental Programs in:
 • Art • Music • Skills
 • Language • Social Development
 Continuous day care program for working mothers
 Nutritionally Balanced Lunch
 State Licensed certified school & teachers
 DEDICATED TO A PROGRAM OF EARLY CHILDHOOD EDUCATION

Call or come in to register
 School open to visitors
 Developmental Programs in:
 • Art • Music • Skills
 • Language • Social Development
 Continuous day care program for working mothers
 Nutritionally Balanced Lunch
 State Licensed certified school & teachers
 DEDICATED TO A PROGRAM OF EARLY CHILDHOOD EDUCATION

Call or come in to register
 School open to visitors
 Developmental Programs in:
 • Art • Music • Skills
 • Language • Social Development
 Continuous day care program for working mothers
 Nutritionally Balanced Lunch
 State Licensed certified school & teachers
 DEDICATED TO A PROGRAM OF EARLY CHILDHOOD EDUCATION

Call or come in to register
 School open to visitors
 Developmental Programs in:
 • Art • Music • Skills
 • Language • Social Development
 Continuous day care program for working mothers
 Nutritionally Balanced Lunch
 State Licensed certified school & teachers
 DEDICATED TO A PROGRAM OF EARLY CHILDHOOD EDUCATION

Call or come in to register
 School open to visitors
 Developmental Programs in:
 • Art • Music • Skills
 • Language • Social Development
 Continuous day care program for working mothers
 Nutritionally Balanced Lunch
 State Licensed certified school & teachers
 DEDICATED TO A PROGRAM OF EARLY CHILDHOOD EDUCATION

Call or come in to register
 School open to visitors
 Developmental Programs in:
 • Art • Music • Skills
 • Language • Social Development
 Continuous day care program for working mothers
 Nutritionally Balanced Lunch
 State Licensed certified school & teachers
 DEDICATED TO A PROGRAM OF EARLY CHILDHOOD EDUCATION

Call or come in to register
 School open to visitors
 Developmental Programs in:
 • Art • Music • Skills
 • Language • Social Development
 Continuous day care program for working mothers
 Nutritionally Balanced Lunch
 State Licensed certified school & teachers
 DEDICATED TO A PROGRAM OF EARLY CHILDHOOD EDUCATION

Call or come in to register
 School open to visitors
 Developmental Programs in:
 • Art • Music • Skills
 • Language • Social Development
 Continuous day care program for working mothers
 Nutritionally Balanced Lunch
 State Licensed certified school & teachers
 DEDICATED TO A PROGRAM OF EARLY CHILDHOOD EDUCATION

Call or come in to register
 School open to visitors
 Developmental Programs in:
 • Art • Music • Skills
 • Language • Social Development
 Continuous day care program for working mothers
 Nutritionally Balanced Lunch
 State Licensed certified school & teachers
 DEDICATED TO A PROGRAM OF EARLY CHILDHOOD EDUCATION

Call or come in to register
 School open to visitors
 Developmental Programs in:
 • Art • Music • Skills
 • Language • Social Development
 Continuous day care program for working mothers
 Nutritionally Balanced Lunch
 State Licensed certified school & teachers
 DEDICATED TO A PROGRAM OF EARLY CHILDHOOD EDUCATION

Call or come in to register
 School open to visitors
 Developmental Programs in:
 • Art • Music • Skills
 • Language • Social Development
 Continuous day care program for working mothers
 Nutritionally Balanced Lunch
 State Licensed certified school & teachers
 DEDICATED TO A PROGRAM OF EARLY CHILDHOOD EDUCATION

Call or come in to register
 School open to visitors
 Developmental Programs in:
 • Art • Music • Skills
 • Language • Social Development
 Continuous day care program for working mothers
 Nutritionally Balanced Lunch
 State Licensed certified school & teachers
 DEDICATED TO A PROGRAM OF EARLY CHILDHOOD EDUCATION

Call or come in to register
 School open to visitors
 Developmental Programs in:
 • Art • Music • Skills
 • Language • Social Development
 Continuous day care program for working mothers
 Nutritionally Balanced Lunch
 State Licensed certified school & teachers
 DEDICATED TO A PROGRAM OF EARLY CHILDHOOD EDUCATION

CHILD CARE

NURSERY SCHOOLS

Sandy Lane
Nursery School
 PRE-SCHOOL
 DAY CARE
 KINDERGARTEN
 AGES 2-6
 "A CHILD'S WORLD
 WHERE PLAYING IS LEARNING"
 634 Mill Street
 Belleville
 751-6380
 Days & hours to meet your needs.
 Hours: 7:45-5:45
 Call or come in to register
 School open to visitors
 Developmental Programs in:
 • Art • Music • Skills
 • Language • Social Development
 Continuous day care program for working mothers
 Nutritionally Balanced Lunch
 State Licensed certified school & teachers
 DEDICATED TO A PROGRAM OF EARLY CHILDHOOD EDUCATION

Call or come in to register

HELP WANTED

EXPERIENCED CIRCULATION/PROMOTION MANAGER

Weekly newspapers. Nutley location.

Full or Part Time.

Salary open

661-2345

HOUSEKEEPER

Responsible full time housekeeper wanted. Unusual opportunity for long term employment with family in Montclair, 2 small children (1 infant - 1 pre-school) and working professional couple. Live in or out, 5 day week preferred, hours flexible but evening work hours required. No week-end unless desired. Other full time household help in residence to share housekeeping, child care & cooking responsibilities. Non-smoking English speaking person with own transportation preferred. If live in, modern private room & bath will be provided.

Please call 783-4669

Recent references required

LIGHT FACTORY WORK PACKERS/OPERATORS FEMALE/m

EVENING SHIFT 3 P.M. - 11 P.M.

EXPERIENCED FACTORY WORKERS PREFERRED. LIGHT CLEAN WORK. STEADY JOB AT NEW MANUFACTURING PLANT.

VAN NISS PLASTICS

555 CORTLANDT ST. BELLEVILLE 759-6200

MACHINISTS

Experienced in operating:

- Engine lathe • Radial Drill
- Milling Machine • N.C. Equipment
- Drill Press • Horizontal Boring (nights)

Must do own set up & work from drawings with minimum supervision. Full benefits program. Modern plant & equipment.

Apply in person

STANDARD TOOL & MANUFACTURING CO.

738 Schuyler Ave. Lyndhurst, N.J.

An equal opportunity employer

SECURITY GUARDS

Immediate openings on all shifts. Must have clean record, car & phone. Uniforms, hospitalization & insurance supplied. Applicants apply in person.

INTERSTATE SECURITY

576 Central Ave., East Orange, N.J. For after hours interview, 876-3720

Interviews Mon. thru Thurs. 9-4 p.m.

An equal opportunity employer

TELEPHONE SALESPEOPLE

Full Time Only!

Immediate opening in classified sales department. Good typing skills required. Must have pleasant telephone manner for customer contact. Previous office experience preferred but will train. Apply in person.

NUTLEY SUN

777 Bloomfield Ave., Nutley, N.J.

WAREHOUSE ASSISTANT

Shipping and Receiving

H.S. grad preferred. Good with figures. Able to do physical work. Some warehouse or factory experience preferred. Steady job.

VanNess Plastics

555 Cortlandt St., Belleville 759-6200

WOMEN/M

Immediate Openings

We have a number of production jobs, open right now which you might be able to do. Work is clean but small. No manufacturing experience is necessary, however, you must have very good eyesight and finger dexterity. We will train you.

DAY SHIFT: 8 a.m. to 4:30 p.m.

NIGHT SHIFT: 6 p.m. to 12 Midnight

Interviews Monday thru Friday 9:30 A.M. - 3:30 P.M.

Don't Wait, Come In Now!

GORDOS CORPORATION

"By The Park"

250 Glenwood Ave. Bloomfield, N.J. Phone 743-6800

An Equal Opportunity Employer M/F

CLERK TYPIST

General office duties and figure work - 4:30 P.M.

MILLER & SON

24 Belleville Ave. Belleville 759-6445

BE A FULL TIME PARENT AND STILL EARN \$100 PART TIME

CALL MONDAY 9 - 4 P.M. 748-0495

HELP WANTED

BANK TELLER NUTLEY

Immediate opening. Excellent growth opportunity. Experience preferred. Liberal benefits.

Call Personnel Dept. Toll FREE 800-562-6900, ext 386

SUBURBAN SAVINGS & LOAN ASSOCIATION

An equal opportunity employer m/f

BOOKKEEPER ASSISTANT

Fast growing company needs person to post C/D, A/P, A/R. No experience necessary. Must have some basic bookkeeping knowledge. Hours 8:30 - 5 p.m.

Call 751-6600

Clerk-Typist

Individual with excellent typing skills, aptitude for figures. June graduate acceptable. Liberal benefits.

Stop in or call Mr. Layton Wallace & Tiernan Div. REPAVAL CORPORATION, 25 Main St. Belleville Phone: 759-8000

An equal opportunity employer, M/F

DREAMS BIGGER THAN YOUR PAYCHECK? WANT TO ESTABLISH THAT SECOND INCOME?

If you have 6-8 hours weekly to spare I'll show you how. No telephone interviews.

For appt. call between 4-7pm 751-6239

MAINTENANCE MECHANIC

Some knowledge of machine repairs and pipe fitting for large industrial laundry. Good rates & excellent fringe benefits.

Apply in person A & P TEA CO. 265 Cortlandt Belleville 759-4444

Equal Opportunity Affirmative Action Employer m/f

MALE/MALE SHIPPING, RECEIVING, INVENTORY & EXPEDITING PERSON

Must be capable of handling telephone. Full time. Send resume to:

P.O. BOX 271 Nutley, N.J. 07110

MATURE PERSON

Wanted as housekeeper for working mother of 5 children.

Call 661-2634 after 6:30 p.m.

MATURE PERSON

To keep house and care for 3 school age children. Hours: 2 p.m. - 9 p.m. Mon., Tues & Thurs.

Call 661-1040 After 12 noon weekdays only

INSURANCE

Personal Lines Rater & Checker

Good typist Experience helpful For pleasant downtown agency

C.J. SIMONS & CO.

563 Broad St., Newark

Ask for "JEAN"

INSURANCE

Brokerage office needs experienced person to head life & group dept. Involves contact with clients & companies, proposals, & if you desire, some outside sales and/or service. Successful skills helpful. Ability to work on your own. Great opportunity for advancement. All benefits including pension plan.

CALL MRS. GAYDOS for appt. 678-5252

KEYPUNCH OPERATORS

Local service bureau has several openings for experienced keypunch operators. Day or Evening Hours. Full Time or Part Time. TOP PAY FOR TOP OPERATORS. Company benefits include paid Blue Cross, Life Insurance, vacation and profit sharing.

Call for appointment 667-8800

LEGAL SECRETARY

4-5 years experience in commercial litigation. Excellent skills and initiative required. Pleasant working conditions in attractive West Orange office.

Call 736-9180

LEGAL SECRETARY

Need money for that summer vacation? You can earn \$30 for 2 hours work showing beautiful candles. Car necessary.

Call 429-8455

MECHANIC WANTED FOR CHEVROLET GAS ENGINES

Call 483-3202

ONE EXPERIENCED METAL AND FRAMING PERSON

Wanted to work in clean modern top quality shop. Apply:

Waher's Auto Body 519 Forest St. Kearny

P/T Evenings \$4. per hour TELEPHONE SOLICITORS

991-7373 or 991-7337

WANTED TRUCK DRIVER

For beer deliveries. Must be familiar with counties in northern New Jersey.

Call 344-8149 between 11 a.m.-2 p.m.

TYPIST for billing

Must be experienced and must be good with figures.

991-6117

CLERK TYPIST

General office duties and figure work - 4:30 P.M.

MILLER & SON

24 Belleville Ave. Belleville 759-6445

BE A FULL TIME PARENT AND STILL EARN \$100 PART TIME

CALL MONDAY 9 - 4 P.M. 748-0495

HELP WANTED

PART TIME

Hours 9:30 A.M. - 1:30 P.M. 6 P.M. - 10 P.M. Daily & Sat. morns.

4 people needed to work for large national concern in newly opened Bloomfield office. No experience required. Complete training provided and paid for at hourly rate. For interview call Mr. Samuel between 10am-1pm and 5pm-7pm.

743-5936.

RECEPTIONIST

Wanted for small office. Full time. Some lite typing. Apply at:

DEMAGO INDUSTRIES INC. 17 Park St., Belleville

"REAL ESTATE"

Licensed Or Unlicensed Sales Associates. If you weren't looking for a new career, you wouldn't be reading this. And if we weren't looking for someone to do this, it wouldn't be here BUT you must have a strong desire to be successful. For a confidential interview to look us over, call:

"CASALE"

Rt. "Makes It Happen"

RETIRED MAN AND/OR WOMAN

To perform custodial duties in retail clothing store. Convenient part time hours.

Apply personal office Monday thru Friday A.M. JANETIE NUTLEY CENTER 667-1900

SECRETARY

Legal experience preferred but not essential for law offices in Newark. Salary commensurate with ability. Excellent typing skills a must. Light stenographic, parking available. Please call between 10-4pm for an appointment.

624-7174

SECRETARY

AS ASSISTANT TO EXECUTIVE OFFICER OF LOCAL REAL ESTATE BOARD. TYPING & BOOKKEEPING (LIMITED EXPERIENCE ACCEPTABLE). INTERESTING, DIVERSIFIED POSITION. PLEASANT, RELAXED ATMOSPHERE. SALARY OPEN.

Call 622-7585

SECRETARY

Join this major manufacturer of fire protection equipment, and put your excellent stenographic and typing skills to full use. We need a secretary with a good command of English and good grammar. You'll join our staff of present people, earning an attractive salary, and liberal non-contributory benefits, including dental plan, generous holiday and vacation schedule, company cafeteria, and on-site parking. Please call V.J. Miller at 759-5000 for an interview appointment.

KIDDE BELLEVILLE

Division of Walker Kidde & Co., Inc. 675 Main St. Belleville, N.J. Equal Opportunity Employer M/F

TEMPORARY OFFICE WORKERS WE NEED YOU!

Stenographers, Typists, Bookkeepers, Switchboard Operators All General Office Clerks.

GOOD RATES-NO FEE

Register Once - Call 991-9080

THE JONES GIRLS

232 Belleville Pike Kearney, N.J.

TRUCK MECHANIC

Experienced International Harvester. Knowledge of welding desirable. Full or part time. Call

PORT-O-SAN

997-3900

WANTED TRUCK DRIVER

For beer deliveries. Must be familiar with counties in northern New Jersey.

Call 344-8149 between 11 a.m.-2 p.m.

TYPIST for billing

Must be experienced and must be good with figures.

991-6117

CLERK TYPIST

General office duties and figure work - 4:30 P.M.

MILLER & SON

24 Belleville Ave. Belleville 759-6445

BE A FULL TIME PARENT AND STILL EARN \$100 PART TIME

CALL MONDAY 9 - 4 P.M. 748-0495

CLERK TYPIST

General office duties and figure work - 4:30 P.M.

MILLER & SON

24 Belleville Ave. Belleville 759-6445

BE A FULL TIME PARENT AND STILL EARN \$100 PART TIME

CALL MONDAY 9 - 4 P.M. 748-0495

CLERK TYPIST

General office duties and figure work - 4:30 P.M.

MILLER & SON

24 Belleville Ave. Belleville 759-6445

BE A FULL TIME PARENT AND STILL EARN \$100 PART TIME

CALL MONDAY 9 - 4 P.M. 748-0495

CLERK TYPIST

General office duties and figure work - 4:30 P.M.

MILLER & SON

24 Belleville Ave. Belleville 759-6445

BE A FULL TIME PARENT AND STILL EARN \$100 PART TIME

CALL MONDAY 9 - 4 P.M. 748-0495

CLERK TYPIST

General office duties and figure work - 4:30 P.M.

MILLER & SON

24 Belleville Ave. Belleville 759-6445

BE A FULL TIME PARENT AND STILL EARN \$100 PART TIME

CALL MONDAY 9 - 4 P.M. 748-0495

CLERK TYPIST

General office duties and figure work - 4:30 P.M.

MILLER & SON

24 Belleville Ave. Belleville 759-6445

REAL ESTATE

DELI-CATERING: Nutley location. Grossing \$2500 - \$3000 weekly. Owner wants quick sale on this lucrative money maker.

CONFECTIONARY: LUNCHONETTE: Top Bloomfield location has Pick-It. Owner will finance to qualified buyer.

SUB SHOP: Bloomfield, opposite shopping center. Gross \$1400 a week. Owner wants offer.

DELICATESSEN: Nutley, ind. land, building, fixtures & business. Located in high traffic area. Perfect for partners or family.

Call Realtor for details

GLENWOOD Real Estate Agency

429-7380

905 Broad St., Brookdale

NO FEE TO YOU

Tenants are qualified, have references and are checked. Call us with your vacancies.

LIVING SPACE REALTY

235-0800

LANDLORDS!

Let Us Rent Your Apt. 1. NO FEE TO YOU

We'll submit application from tenant for your approval. CARL A. ORECHIO AGCY 667-7733

BELLEVILLE GARDENS

3 & 4 year garden apartment. Heat, hot water, stove, refrigerator & parking. \$260 to \$290. Rental.

5-B BELLEVILLE COURT

759-2227

PASSAIC PARK

3 rooms. Heat, gas & electric supplied. \$280 per month. Adults preferred.

Call after 4PM. 472-324

HOT DOG TRUCK FOR SALE BEST OFFER 751-6343

FOR SALE - BEAUTY SALON.

Call 667-3966

REAL ESTATE

FOR RENT

INDUSTRIAL BUILDING

For rent - Nutley area.

45' x 45' 24' ceiling

Stand alone building.

Immediately available, as is. \$3. per sq. ft. Lease required.

For additional information, Call 667-0077

STORE FOR LEASE

On First Floor

Close to ShopRite

CENTRAL NUTLEY LOCATION

\$400. per month

CALL 667-2700

PRIME LOCATION PROFESSIONAL BUILDING

247 FRANKLIN AVE. NUTLEY

830 SQ. FT. AVAILABLE FIRST FLOOR ON SITE PARKING

CALL 235-1550 EVENINGS 239-7619

FOUND DOG

Long black hair, white chest, brown eyes. Female, no collar. Found Passaic & Brookfield Ave., Nutley area.

Call 235-1169 anytime

LOST PASSBOOK #1620, Nutley Savings & Loan, Nutley, N.J. Payment stopped, return book to bank.

LOST PASSBOOK #30762, Nutley Savings & Loan, Nutley, N.J. Payment stopped, return book to bank.

LOST PASSBOOK #1-230-2-0004326-5 First National State Bank of NJ, Nutley, Midtown Branch. Payment stopped, return book to bank.

LOST PASSBOOK #300036, Nutley Savings & Loan, 371 Franklin Ave. Payment stopped, return book to bank.

FOUND DOG

Long black hair, white chest, brown eyes. Female, no collar. Found Passaic & Brookfield Ave., Nutley area.

Call 235-1169 anytime

REAL ESTATE

FOR RENT

NUTLEY: 3 1/2 MODERN ROOMS. 2nd floor. 2 family house. Convenient to transportation. Heat & hot water. \$500. Call 667-4999.

LYNDHURST: Single person: new kit & bath, dishwasher. All util. good. \$250. Call 999-3039-935-2530.

BELLEVILLE, 4,000 square feet. Ideal for manufacturing. Clear span ground floor. Call 473-7288.

BELLEVILLE 6 ROOM APT.

Available April 1st 2nd fl. Heat & hot water up, w/c carpeting, painted, laundry hook-ups. No Pets. \$350. + 1 month.

Call 751-4691

MORTGAGES & LOANS

McGRANE MORTGAGE CO

Secondary Mortgage Loans

LICENSED PURSUANT TO THE SECONDARY MORTGAGE LOAN ACT. NO LEGAL FEES OR CLOSING FEES.

254 KINGLAND STREET NUTLEY, N.J. 719

REAL ESTATE

BELLEVILLE 2 FAMILY COLONIAL

Brick & alum. like New: 5/4 large liv. rm., large mod eat-in kitchen, 3 bedrooms 1st fl. Large liv. rm., mod eat-in kitchen, 2 bedrooms 2nd fl. Both tile baths. Large fin rec rm. #5 School. Asking \$80's.

BLOOMFIELD 2 FAMILY

5/4, alum ext, tile bath, Spotless Cond. N.Y. bus at door. Asking \$69,900.

\$39,900 COLONIAL 6 rooms, mod tile bath, 220 elec. Owners retire. Want Quick Sale!

GLENWOOD Real Estate Agency

429-7380

905 Broad St., Brookdale

BAYVILLE, N.J. LAGOON

LOT 100-100 Severly ready to build. 1 hr. drive to Atlantic City. 269-0343

BELLEVILLE BEAT SPRING RUSH

Charming Eng. col. overlooking golf course. LR, DR, Xlg mod kit, 3 lg. BRs, attic fin. w/v. carport, shades. Asking mid \$60's.

LAURON AGENCY 751-0125

Call the CARL A. ORECHIO AGCY at 667-4000 for any REAL ESTATE or INSURANCE SERVICE.

We're at 47 Washington Ave. Nutley, N.J. 718

NUTLEY SUPER BUY

Maintenance free exterior. 3 bdrm. Colonial. mod kit. 1 1/2 baths, modern decor. Lovely Spring Garden area.

\$52,900

4 room Colonial. Large lot. 2 1/2 car garage. Immediate possession.

MOVE RIGHT IN

Completely remodeled in and out. 6 room Colonial. Mid \$60's.

Aladdin Realty

Tom Viola, Realtor 235-0550

A.C. BONADIES AGENCY & REALTOR

- Realtor • Notary Public
- General Insurance
- IFA Appraiser
- Property Management

HOMES \$30,000.00

"Something To Fit Everyone's Needs!"

NO LANDLORD FEE TO RENT APT!

667-3534

WE WANT YOU!

THESE HOMES ARE LOOKING FOR NEW OWNERS

2 & 3 BEDROOM COLONIALS, CENTRAL A/C CAPE ALL PRICED IN THE 60's.

LET US INTRODUCE YOU TO WHAT COULD BECOME A LASTING RELATIONSHIP

Everyone Knows

GEORGE T. BOWES Realtor

681 Franklin Ave. Nutley 667-3376

BLOOMFIELD CUSTOM SPLIT

What a beauty in Brookdale! 3 huge bedrooms, 2 baths, 12' x 22' fam room on 1st fl. Terrific!

GEO. E. MACMUNN CO. REALTOR

Nutley Anytime 667-3440

NUTLEY 4 BEDROOM CAPE

1 1/2 baths, huge basement & 2nd appliances. 40 x 100. Near schools & transportation.

BLOOMFIELD OAKVIEW

Charming Brookdale Colonial with fireplace in living rm. powder rm on 1st fl. 3 good size bedrooms & fin. rec rm. 12' x 12' in the 1700. Call To See!

Call 471-1173

BELLEVILLE VERY INVITING!

Charming English Colonial with 3 good size bedrooms with Xlarge kitchen, living rm, dining rm, fin. rec rm, att. garage. Priced to sell in the \$60's.

NUTLEY 2 BEDROOM COLONIAL

With family rm, near NY trans. Call For Details!

Call Realtor SUBURBAN REALTY & INSURANCE CO INC.

37-39 Broad St. In Bloomfield Center 748-9090

YOU MUST SEE THIS LARGE Colonial on Hamp lot with fireplace, ELK, 4 bedrooms & finished attic. Make An Offer!

CARL A. ORECHIO AGCY 667-7733

Eves Mrs. Oregore 235-1549

NUTLEY IMMACULATE COLONIAL

Located on large well landscaped lot. Excellent section. In kitchen, enclosed porch. Realtor B. Cook 1/4

WILLIAM J. JERNICK JR.

301 Parkside Ave. N.Y. 667-1000

Call Realtor SUBURBAN REALTY & INSURANCE CO INC.

37-39 Broad St. In Bloomfield Center 748-9090

Call Realtor SUBURBAN REALTY & INSURANCE CO INC.

37-39 Broad St. In Bloomfield Center 748-9090

Call Realtor SUBURBAN REALTY & INSURANCE CO INC.

37-39 Broad St. In Bloomfield Center 748-9090

AEROBIC DANCING
a whisper
of exercise
A SHOUT OF FUN
FREE DEMONSTRATION
MONDAY, MARCH 26th
8 P.M.
Franklin Reformed Church
Hillside Crescent
Nutley
Wear Sneakers and join the fun!

ROLLER SKATING PARTIES
of all kinds
AVAILABLE
Mon. thru Sun.
PUBLIC MEMBERS
Sat. 8:00 - 9:00 P.M.
7:30 to 11 P.M.
Wed. Afternoons
2:30 to 5:00 P.M.
LIVINGSTON ROLLER RINK
613 So. Livingston Ave.
Livingston, N.J.
992-4161 or 482-9416

A Business Manager Who Really Knows The Business.
Rudy De Falco
Supreme Oldsmobile, New Jersey's No. 1 retail Oldsmobile dealer is proud to announce the appointment of Rudy De Falco as our new business manager. Old friends and customers are invited to stop in and see Rudy for all their new and used auto needs.
SUPREME OLDSMOBILE
751-2121
53 Washington Ave., Belleville, N.J.
Long Term Financing Always Available

REAL ESTATE
FOR SALE
BAYVILLE, N.J. Lagoon lot 80x100, sewers, ready to build. 1 hour dr. to Atlantic City 269-0343
ATTENTION!
As Of June, 1979 Nutley Will Have Its Own CABLE TV STATION CHANNEL "T"
For an additional \$1, your ad will appear repeatedly during the day for a period of one week. For additional information, call:
667-3000
N.E. PENNSYLVANIA
2-4 acre lots. Roads & power in. Woodlands. Near skiing, hunting, fishing. Price range: \$2400-\$2800 per acre. Owner.
Call 991-0095
BELLEVILLE
2 FAMILY
JUST LISTED. 20 years young. Above Union Ave. 4 extra lg. rooms on 1st; 3 on 2nd. A great buy in 60's!
CEO. E. HACHMAN CO. REALTOR
Nutley Anytime 667-3440
FURNISHED ROOMS
BELLEVILLE
2 FURNISHED ROOMS
Newly painted. All utilities included. Available April 1st.
Call 759-5358
NEAR BELLEVILLE LINE:
Sleeping quarters for rent. 897 Lake St., Newark. Come after 4 P.M.
3/29
GREEN GABLES
308 Passaic Avenue, Nutley
Near Chestnut Street
Lodging Accommodations for gentlemen
Ample parking space
667-0571
4/12
GILLIS PLAZA HOUSE
265 Hillside Ave. Nutley
LARGE COMFORTABLE FURNISHED ROOMS near Hoffmann-La Roche and IIT. Free parking
661-0872 3/19

REAL ESTATE
FURNISHED ROOMS
LATHAM HOUSE
144 Whitford Avenue
Nutley
Large room. Transient or Permanent. Parking. Private Entrance. Residential Section. Gentlemen Preferred.
667-6959
4/21
THE WHITE HOUSE
420 Centre St., Nutley
Call after 5pm.
759-8820 or 751-2509
Central Location
Large Comfortable furnished rooms. 4/28
Weekly or Monthly
SUMMER RENTALS
LAVAILLETTE
2 bed rooms, liv room, kitchen, din room, closed front porch, both & shower; w/w carpet, deeps. 6 gas grill & picnic table in yard, immaculate.
2 bed room, liv room, kitchen, bath & shower, w/w carpet, sleeps 4, gas grill & picnic table in yard, immaculate. Owner on property this weekend, 136 Elizabeth Ave. James Sommarca Inc. 939-1978 evenings.
LAVAILLETTE
TWO FAMILY HOUSE
2 bedroom apartment available June-July-August-September. One block to ocean.
Call after 5P.M.
751-2707 3/22
WANTED TO RENT
GARAGE OR STORAGE SPACE WANTED.
Required for a 2 to 4 cars
Storage Only.
No repairs.
Please call 667-6940
10-5 p.m.
3/29

Disco may appeal closing

Continued from page one.
lo's cannot change to a disco with incidental dancing," Zinna added.

The assistant town attorney said that the courts would have to define

just what the variance calls for. "We've been successful so far," he said.

Zinna explained that part A of

the Appellate Division, which includes Judges Herbert Horn, John F. Lynch and John F. Crane, would examine the briefs. "We could expect a decision anywhere from two weeks to two months, but that's only a speculation," Zinna said.

Zinna is currently handling the zoning aspects of Parrillo's cases while Town Attorney John Scott is handling the public nuisance aspect.

Record gains reported by Bloomfield Savings

Bloomfield Savings Bank's year-end statement of condition reports assets of \$465.2 million, an all-time high. The new figure represents a record 14 percent gain of \$57.3 million over the previous year-end.

According to the bank statement, interest paid to the 82,479 depositors in 1978 amounted to \$24.7 million, \$3.1 million more than was paid in 1977.

CASINO CARAVAN TO RESORTS, ATLANTIC CITY
\$15.00 Tour Cost, March 30
Per Person April 6 & 20
NIGHT TOUR INCLUDES:
"NON-STOP Round trip bus transportation from Belleville to Resorts (Leave 5:45 p.m. Return by 5 a.m.) * Lounge Show & Cocktail * Midnight Brunch * Wedgewood Pavilion Gaming booklet * Must be 18 years old or older. Men must wear jackets. Ladies: pants suits or dresses.
FOR INFORMATION OR RESERVATIONS:
484-3647
Ask for Anita or Ralph
Sunday trips: Apr. 1 & 29 (Leave 7:30 a.m. Return by 9 p.m.)

Come... Sample Our Fine Cuisine
• FAMILY STYLE DINNERS
• Delicious Seafood
• Italian Food At It's Best
We're proud of our reputation. Come enjoy truly elegant dining... tastefully prepared dishes...lavishly served. Make reservations.
NOW FEATURING SINGING STAR
FRANK TREDICI & RAINBOW
Music & Dancing
Private Parties • Banquet Facilities • Group Rates
Free Parking • Call 622-6221
DON'S 21 RESTAURANT Route 21
Newark
FREE PARKING

NEAR MYRTLE BEACH, S.C.
Retirement Village
Good Weather
Low Taxes and Living Costs
Write
P.O. Box 128 QW.
Little River, S.C. 29566

Maximize your individual retirement income at First National State.

8.00% Interest Compounded Daily.
8.45% Effective Annual Yield.*

First National State IRA Plan Accounts earn the highest rates allowed by law.

If you have no pension plan where you work, First National State has a way to plan for your retirement and earn a maximum rate on your retirement savings dollars.

People who work for companies without a pension plan can open a tax-deductible First National State Individual Retirement Account (IRA).

Money deposited in an individual retirement account (IRA) may earn 8% interest.

or 8.45% Effective Annual Yield, which is the highest rate allowed by law.** You may deposit into your established IRA Plan or open a new one until April 16, 1979, plus any extensions, and this will give you a break on your 1978 Federal income taxes.

To get the complete story on how to take advantage of this tax saving, money-earning retirement plan, write or call your local branch manager. But do it today.

*Yield applies to deposit of \$1,500.

**Substantial penalties may be required for early withdrawal as required by Federal Regulations.



A great bank can make a great difference.

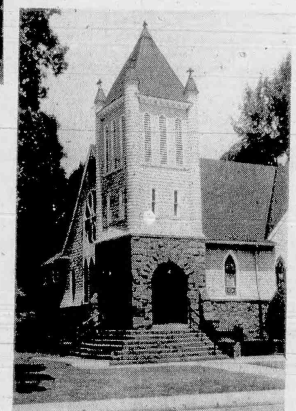
Serving you locally at 350 Centre Street, 575 Kingsland Avenue,
356 Franklin Avenue and 495 Franklin Avenue

* First National State Bank of New Jersey 550 Broad Street, Newark, New Jersey 07102. (201) 565-3153.
Member First National State Bancorporation Member FDIC.

THE ANNIE OAKLEY HOUSE
SPECIAL PUBLICATION
DATE:
JULY 5, 1979

WASHINGTON SCHOOL

NUTLEY ...
It's History —
It's Growth —
It's Future
Recorded In Our Unique
85th. ANNIVERSARY ISSUE OF
The Nutley Sun



SAINT PAUL'S CHURCH

To Participate
In This Special
Advertising Medium
Please Call:
667-2700
FOR AN IMMEDIATE
PERSONAL APPOINTMENT



What's For Dinner?

ShopRite has the Answer!!

The MEATing Place®

U.S.D.A. GRADE "A" WITH RIB CAGE
FROZEN

TURKEY BREAST

4 TO 8 LB. AVERAGE

\$1.27

LB.



U.S.D.A. CHOICE
BEEF CHUCK

BONELESS POT ROAST

\$1.79

LB.



Ground Turkey	100% PURE LOW FAT FROZEN 1 LB. BOLL.	1 lb.	\$1.19
Pork Shoulder	FRESH WATER ADDED	1 lb.	99¢
Pork Shoulder	SMOKED WATER ADDED	1 lb.	99¢
Pork Butts	SMOKED ShopRite	1 lb.	\$1.89
Pork Chops	CENTER CUT RIB CUT	1 lb.	\$1.87
Rib End Loin	PORK FOR BAR-B-QUE	1 lb.	\$1.47
Pork Combo	5-11 CHOPS FROM LOIN PORTION	1 lb.	\$1.47
Pork Loin Roast	BONELESS FROM RIB PORTION	1 lb.	\$1.97

NEW ZEALAND FROZEN SPRING LAMB			
Leg Of Lamb	FROZEN OVEN READY	1 lb.	\$1.47
Lamb Chops	SHOULDER FROZEN BLADE CUT	1 lb.	\$1.57
Shanks Of Lamb	FROZEN	1 lb.	87¢
Beef Liver	FROZEN SKINNED & DEVEINED	1 lb.	89¢
SWIFT'S REGULAR OR GARLIC CORNED BEEF BRISKET \$2.27			

Chuck Steak	BONELESS BEEF	1 lb.	\$1.99
Beef For Stew	BONELESS CHUCK	1 lb.	\$1.99
Chicken Legs	WHOLE WITH THIGHS	1 lb.	87¢
Chicken Breast	WHOLE WITH RIB CAGE	1 lb.	\$1.27
Chicken Breast	SKINLESS AND BONELESS	1 lb.	\$2.27
Kielbassi	HILLSHIRE POLISH STYLE	1 lb.	\$1.89
Beef Sausage	HILLSHIRE	1 lb.	\$1.89
Slab Bacon	VACUUM PACKED BY THE PRICE	1 lb.	\$1.19

The Produce Place



CALIFORNIA
ICEBERG LETTUCE
49¢ head

Navel Oranges	CALIF. "48 SIZE" SUNSET ORANGE EXTRA JUICY	6 for	89¢
Grapefruit	FLORIDA WHITE SEEDLESS LARGE "27 SIZE"	4 for	\$1
Juice Oranges	FLORIDA "100 SIZE"	10 for	99¢
California Lemons	"200 SIZE"	6 for	49¢
Romaine Lettuce	"FLORIDA"	1 lb.	39¢
Escarole & Chicory	"FRESH"	1 lb.	39¢
Pascal Celery	"30 SIZE"	stalk	49¢
Carrots	CALIFORNIA SWEET	3 1-lb. bags	99¢
Radishes	6-OZ. BAG OR SCALLIONS, BUNCH	2 for	39¢
Apples	WASH. STATE RED & GOLDEN DELICIOUS EXTRA FANCY "96-125 SIZE"	1 lb.	49¢
Anjou Pears	LARGE, JUICY	1 lb.	49¢
Baking Potatoes	IDAHO U.S. NO. 1	5-lb. bag	89¢



CALIFORNIA GROWN
FRESH ASPARAGUS
99¢ lb.

The Bakery Place

ShopRite "NO PRES. ADDED" SANDWICH OR REGULAR	WHITE BREAD	20-oz. loaves	\$1
Rolls	ShopRite HAMBURGER OR FRANK PKG. OF 8 - NO PRES. ADDED	3 10-oz. pkgs.	\$1

The Appy Place

STORE SLICED U.S.D.A. CHOICE	COOKED ROAST BEEF	1/2-lb.	99¢
------------------------------	--------------------------	---------	-----

The Fish Market

* FRESH	FILLET OF SCROD COD	1 lb.	\$1.79
---------	----------------------------	-------	--------

Turbot Fillet

INDY. QUICK FROZEN GREENLAND 1 lb. \$1.39

The Ice Cream Place

ShopRite ASSORTED FLAVORS	ALL NATURAL ICE CREAM	1/2-gal. cont.	\$1.59
---------------------------	------------------------------	----------------	--------

Fresh Bake Shoppe

FRESH BAKED	RYE BREAD	1-lb.	59¢
-------------	------------------	-------	-----

The Grocery Place

ShopRite	MACARONI & CHEESE	5 7 1/2-oz. boxes	99¢
----------	------------------------------	-------------------	-----

Corn	DEL MONTE WHOLE KERNEL DECEAN STYLE	4 1-lb. 4-oz. cans	99¢
Savarin Coffee	ALL VARIETIES (EXCEPT DECAF.)	1-lb. 12-oz. cans	\$1.89
Tomatoes	FARM FAVOR	1-lb. 12-oz. cans	39¢
Pasta	No. 10 VERMICELLI, 22 MEDIUM SHELLING, 14 MISTACCOLLI, MEATY OR Shellable No. 4 MEZZAN RIGATI	3 1-lb. 12-oz. cans	89¢
Detergent	GIANT SIZE FAB LAUNDRY	2 1/2 1-lb. boxes	\$1.19
Apple Juice	SPEAS	1 gal. 12-oz. can	\$1.89

PINK OR WHITE	DOVE BATH SOAP	4 1/2-oz. bar	49¢
---------------	-----------------------	---------------	-----

ALL VARIETIES	NESTLE SOUPTIME	1-oz. pkg.	39¢
---------------	------------------------	------------	-----

Apple Sauce	PRIDE OF THE FARM	4 1-lb. 4-oz. cans	99¢
Milk Mate	CHOCOLATE SYRUP	1-lb. 4-oz. cans	99¢
White Tuna	CHICKEN OF THE SEA CHUNK IN OIL	5 1/2-oz. cans	69¢
Tomato Sauce	DEL MONTE	4 15-oz. 12-oz. cans	99¢
C&C Cola	DIET OR REGULAR	1/2-gal. 12-oz. can	59¢
Apple Juice	SPEAS	1 gal. 12-oz. can	99¢
Fresca	COKE OR TAB	2-lb. 12-oz. can	89¢

CARNATION	COFFEE MATE	1-lb. jar	\$1.19
-----------	--------------------	-----------	--------

General Merchandise

MIRRO-PORCELAIN GLAD	SILVERSTONE COOKWARE (NO PURCHASE REQUIRED)	WEEK NO. 7 COVERED 10" FRY PAN	\$8.99 ea.
----------------------	--	--------------------------------	------------

Para Nuggets	OR CRYSTALS	2 1/2 1-lb. boxes	\$1.89
--------------	-------------	-------------------	--------

Health & Beauty Aids

SKIN CONDITIONING	WONDRA LOTION	10-oz. cont.	99¢
-------------------	----------------------	--------------	-----

Maxi Pads	STAYFREE	Box of 299	45
-----------	----------	------------	----

The Dairy Place

REGULAR QUARTERS	PARKAY MARGARINE	1-lb. pkg.	49¢
------------------	-------------------------	------------	-----

Orange Juice	MINUTE MAID	1/2-gal. 11-oz. can	\$1.09
Cottage Cheese	AXELROD	2-lb. 8-oz. cup	\$1.49
Sour Cream	FRIENDSHIP	1-lb. 8-oz. can	69¢
Yogurt	NEW COUNTRY	3 8-oz. cups	\$1

The Frozen Foods Place

ShopRite "GRADE A"	ORANGE JUICE	12-oz. can	69¢
--------------------	---------------------	------------	-----

Banquet Dinners	ASST. VAR. 11-oz. pkg.	59¢
Jeno's Pizza	MULTI PACK SAUSAGE OR CHEESE 16-oz. pkg.	\$1.19
Custard Pie	MRS. SMITH'S COCONUT 25-oz. pkg.	99¢
Mac & Cheese	MORTON'S "FAMILY SIZE" 2-lb. pkg.	89¢

The Deli Place

BEEF OR REGULAR	HYGRADE FRANKS	1-lb. pkg.	99¢
-----------------	-----------------------	------------	-----

Bacon	COLONIAL VAC PACK	1-lb. 1-lb. pkg.	\$1.39
Mohawk Ham	CANNED	5-lb. 8-oz. can	\$8.99
Franks	ShopRite CHICKEN	1-lb. 8-oz. pkg.	89¢
Bologna	ShopRite BEEF-REG.	1-lb. 8-oz. pkg.	\$1.29

VALUABLE COUPON	
12¢ OFF	Towards the purchase of one (1) 12-oz. box
TRIX CEREAL	
Coupon good at any ShopRite market. Limit one per family. Effective Sun., Mar. 18 thru Sat., Mar. 24, 1979.	
SAVE 12¢	ECR 123

VALUABLE COUPON	
15¢ OFF	Towards the purchase of one (1) 18-oz. box
POST SUGAR CRISP CEREAL	
Coupon good at any ShopRite market. Limit one per family. Effective Sun., Mar. 18 thru Sat., Mar. 24, 1979.	
SAVE 15¢	ECR 126

ShopRite Coupon	
1-lb. 5-oz. cans	COMET CLEANSER
3 \$1	WITH THIS COUPON
Coupon good at any ShopRite market. Limit one per family. Effective Sun., Mar. 18 thru Sat., Mar. 24, 1979.	
ECR 130	

ShopRite Coupon	
One (1) 16-oz. can Del Monte	TOMATO SAUCE
10¢	WITH THIS COUPON
Coupon good at any ShopRite market. Limit one per family. Effective Sun., Mar. 18 thru Sat., Mar. 24, 1979.	
ECR 132	

In order to assure a sufficient supply of sales items for all our customers, we must reserve the right to limit the purchase to units of 4 of any sales items, except where otherwise noted. Not responsible for typographical errors. Prices effective Sun., Mar. 18 thru Sat., Mar. 24, 1979. None sold to other retailers or wholesalers. Copyright WAKEFERN FOOD CORPORATION 1979.